

A LEGACY OF QUALITY

# ARCTIC FOX



TRUCK CAMPERS

# NORTHWOOD



[WWW.NORTHWOODMFG.COM](http://WWW.NORTHWOODMFG.COM)

**QUALITY CONSTRUCTION, DISTINCTIVE DESIGN,  
FULL WALL TRUCK CAMPERS DONE RIGHT.**



**THREE INTERIORS TO CHOOSE FROM**



**WINDSWEPT SERENITY**



**SOLITAIRE AZUL**



**DESERT PALMS**

# ARCTIC FOX

## TRUCK CAMPERS

*'The reason for my adulation sits squarely in the brilliant non-slide, mid-bath floor plan and its high-quality execution. The panoramic rear view, full-booth dinette, straight kitchen, large wet bath, and cabover bedroom separation make the floor plan work beautifully. Northwood's top notch quality makes the final product a real winner.*

**2019 Arctic Fox 865 Review - Truck Camper Magazine - March 26, 2019**

Huge Load Capacity w/ 4" Additional Head Room and 5" Thick Rigid Foam at the Crown of the Cathedral Arch Ceiling  
 Heated Enclosed Large Capacity Holding Tanks  
 Solid Wood Cabinet Doors & Drawer Faces  
 One Piece, Laminated Fiberglass Exterior Siding  
 See the Video '36 on the Roof' on the Website

Rieco Titan Remote Controlled Power Jacks Each Rated At 2,500 Lbs.  
 All Conditions 4 Season Insulation  
 Fully Welded Aluminum Frame  
 Large Capacity Storage Compartments  
 Large Battery and LPG Capacities



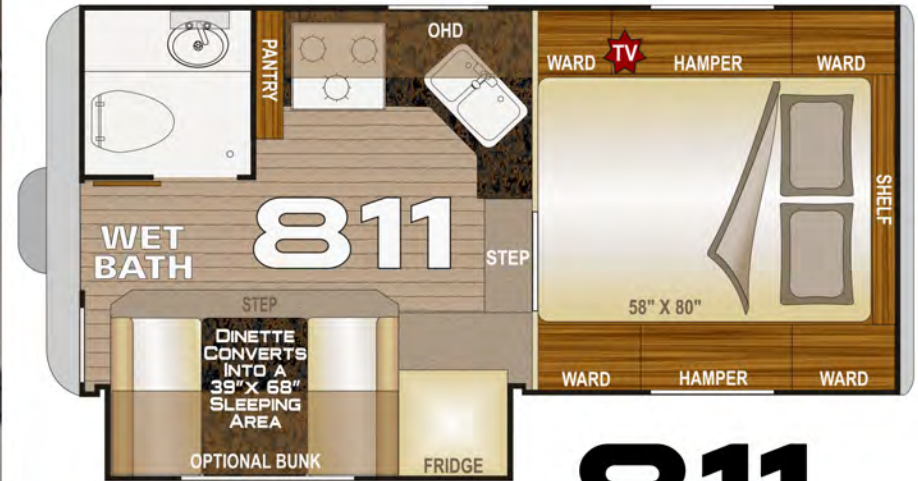
Long & Short Box Option Available

# 865





SOLITAIRE AZUL



Long & Short Box Option Available  
(Generator only available in Short Box Campers)

# 811



- Huge Load Capacity w/ 4" Additional Head Room and 5" Thick Rigid Foam at the Crown of the Cathedral Arch Ceiling
- See the video '36 on the Roof' on the website
- Heated Enclosed Large Capacity Holding Tanks
- Solid Wood Cabinet Doors & Drawer Faces
- One Piece, Laminated Fiberglass Exterior Siding
- Rieco Titan Remote Controlled Power Jacks Each Rated At 2,500 Lbs.
- All Conditions 4 Season Insulation
- Fully Welded Aluminum Frame
- Large Capacity Storage Compartments
- Large Battery and LPG Capacities



Valley of Fire State Park



*My favorite features would be that it has a good amount of storage on the interior. Also it has two 7 gallon propane tanks, a 50 gallon water tank, and is four-season rated, all great features for extended stays while boondocking. The camper came equipped with a 2,500 watt propane onboard generator and a 100 watt solar panel on the roof. I also have an 80 watt portable solar panel that I direct towards the sun. I primarily use solar to recharge my two 105 amp hour AGM batteries. I don't have a big need for power so it keeps up pretty good unless it's cloudy all day then I'll top the batteries off with the generator. It's been a great setup for me so far.*

**Kirk Harris** - Full Timer/ Owner of an Arctic Fox 811 -  
Interview provided courtesy of Mike Smith of [TruckCamperAdventure.com](http://TruckCamperAdventure.com)



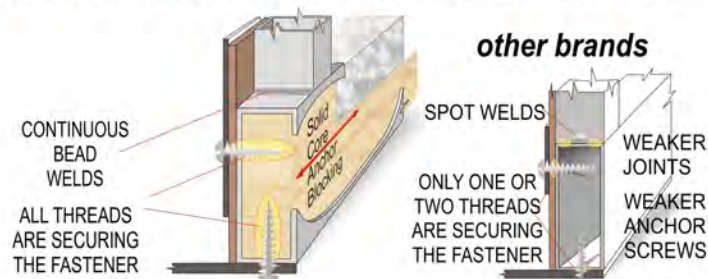
SOLITAIRE AZUL

## ALUMINUM SUPERSTRUCTURE & SOLID CORE BLOCKING

Anchor blocking gives substantial strength at main connection points.



### OUR SOLID CORE ANCHOR BLOCKING



# ABSOLUTE NORTHWOOD

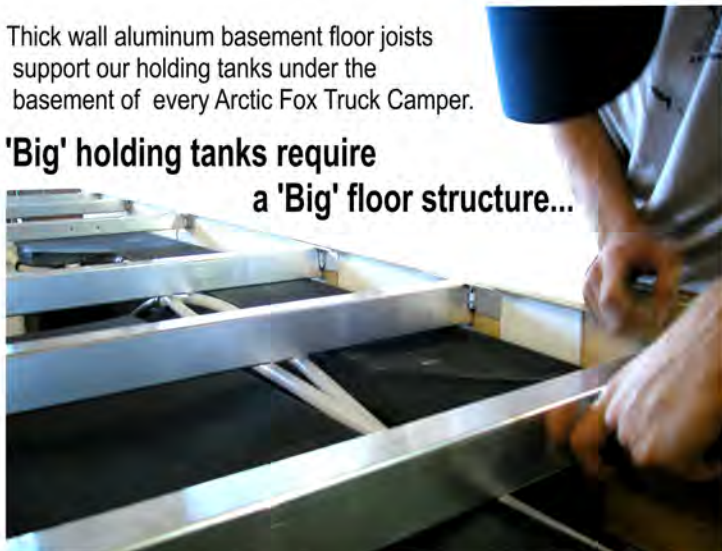
*"Where Quality is Everyone's Responsibility"*



## STRUCTURAL ALUMINUM BASEMENT FLOOR FRAME THAT IS THE ARCTIC FOX BASEMENT FLOOR!

Thick wall aluminum basement floor joists support our holding tanks under the basement of every Arctic Fox Truck Camper.

'Big' holding tanks require a 'Big' floor structure...



*Our Commitment to*  
**QUALITY  
STRENGTH  
DURABILITY**



The Fox Landing offers a large entry platform, convenient fold away stairs and an intermediate step for easy access. The stairway can be installed to the left or right of the landing and the platform folds up out of the way for travel or when hitching your boat or trailer. Check it out!

- \* 4 Equal Height Steps
- \* Mid Step (Between Bumper & Threshold)
- \* Wide Bumper
- \* Left or Right Hand Accessible
- \* Steps Fold Up in Seconds
- \* Single Pin Locks Into Position
- ..Exclusively in Northwood Campers!!!

**Please Note:**  
The Mid Step is an option when adding a Fox Landing to a previously purchased camper.



1. Steps in the down position.



2. Treads fold up.



3. Landing folds up, and pin locks it into place

## SOLID WOOD CABINETRY MOUNTED TO THE WALLS AND THE CEILING



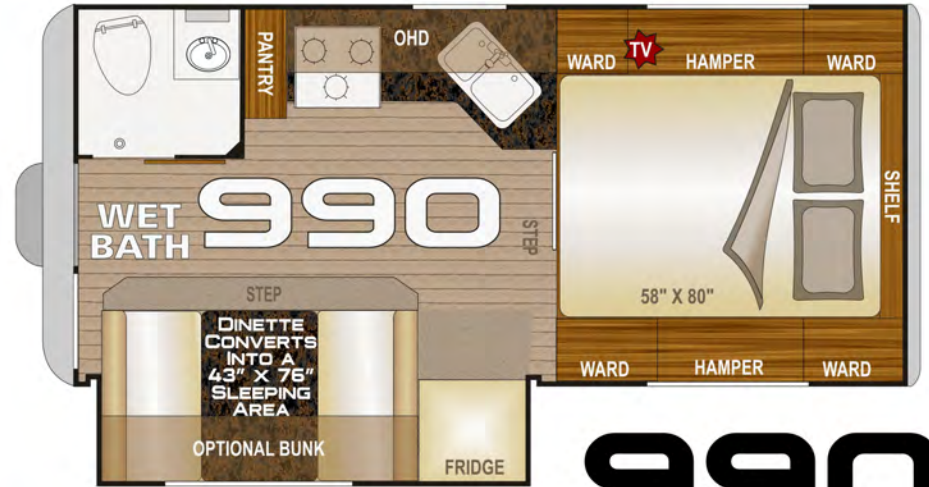
By using solid wood face frame construction and then integrating the cabinet with the structure of the ceiling and walls, our coaches and our cabinets are both made stronger.

### 4 SEASON ALL WEATHER CAMPER

Our fully enclosed, insulated and heated holding tank area circulates air around the suspended tanks providing the best protection from freezing. All our dump valves are also enclosed and heated to ensure smooth operation, even in cold northern climates.



SOLITAIRE AZUL



990



- Huge Load Capacity w/ 4" Additional Head Room and 5" Thick Rigid Foam at the Crown of the Cathedral Arch Ceiling
- See the video '36 on the Roof' on the website
- Heated Enclosed Large Capacity Holding Tanks
- Solid Wood Cabinet Doors & Drawer Faces
- One Piece, Laminated Fiberglass Exterior Siding
- Rieco Titan Remote Controlled Power Jacks
- Each Rated At 2,500 Lbs.
- All Conditions 4 Season Insulation
- Fully Welded Aluminum Frame
- Large Capacity Storage Compartments
- Large Battery and LPG Capacities

I love my Arctic Fox 990 as I can go anywhere and just camp out for a week or so out in the boonies.

Quartzsite, AZ  
BML Long Term Visitor Area

Frank Poole



SOLITAIRE AZUL

# 124 REASONS TO BUY AN ARCTIC FOX CAMPER

## Construction

Aluminum Superstructure  
Welded Aluminum Framing (.060" - .125")  
Solid Fill Anchor Blocking  
2 lb. Virgin Block Foam Insulation  
Full Walk-On Roof  
Cathedral Arch Ceiling - 5" Thick at Crown  
w/ Huge Load Capacity and Insulation Rating  
Thick Seamless One Piece Roof Membrane  
Transverse Floor Maximizes Floor Space  
Continuous 1 Piece Fiberglass Cabover  
Rack and Pinion Slide Out Mechanism

## Exterior

LED Running Lights  
LED Tail Lights - Recessed Automotive Style  
Large 1" Thick, Insulated Compartment Doors  
Metal Latches, Catches, and Pulls  
Automotive Bulb Seals Around All Doors  
12V Light in Valve Compartment  
Removable 110V Power Cord (30' Length)  
Outdoor High Pressure Rinse Station  
5/8" Steel Gas Manifold  
Diamond Plate Armor Above Bumper  
Entry Door w/ 2 View Windows  
Deluxe Bumper w/ Hose Carrier  
3 Position Bumper Step Mount  
Entry Door/ Patio Light  
Exterior Convenience Light (Non-slide Side)  
Black Tank Flush  
Exterior 110 Volt Outlets (GFI Protected)  
45 Watt Solar Panel  
TV Antenna/ HD/ w/Signal Amplifier  
Rain Gutters and Large Drip Spouts  
LP Hookup for BBQ  
Frameless Windows  
80/20 Window Tint  
Safety Glass Windows  
Thermal Pane Window Option  
Optional 2500 W Onan Cummins Generator  
Optional Fox Landing

## Interior

Solid Wood Cabinetry  
Face Frame Cabinet Construction  
3 Interior Color Décor Choices  
AM/FM/CD/DVD Player w/Bluetooth  
Adjustable Rheostat Controlled Lights (5)  
Recessed LED Lighting  
Custom One Piece Formed Countertop  
and Dinette Table  
Ceiling Carpet Liner

2 LED Strip Lights  
Night/Privacy Shades  
Direct Spark Ignition LP/110 Water Htr  
Adjustable Heat Vents  
Systems Monitor Panel  
12 Volt Disconnect Switch  
8 - 110 Volt Outlets (9 in Dry Bath Models)  
Large Capacity Holding Tanks  
Enclosed Heated Holding Tanks  
Enclosed Water Heater Termination Valves  
Pre-Wired for Solar Panel  
Pre-Wired for Satellite Receiver  
Power Converter with Charger  
Charge Wizard © Battery Maint. System  
Generator Ready (Most Models)  
Generator Transfer Switch (Most Models)  
20K Auto Ignition Furnace  
Storage Step into Cab Over

## Slide Out

All Dinettes are Full Wall Slideouts  
26" Deep Slide (Most Models)  
Oversized Dinette Window  
Dream Dinette  
Longer/Wider Dinette Table  
Dinette Converts to 43"x 76" Bed (Most Models)  
4 Seals on Slide-Out  
Below Seat Storage  
High Density Foam Seat Cushions  
Optional Fold Down Ohd Bunk w/ Pad  
Below Step Storage

## Bathroom

Fiberglass Shower Stall (Wet Bath Only)  
Bathroom Skylight  
Vanity Cabinet & Mirror  
Freeze Resistant Waterlines  
Marine Grade Toilet

## Aluminum Superstructure



## Dual Battery Rack

Sliding Dual Battery Tray  
Holds Two Group 29 Batteries  
420 Amp Total Capacity  
on Metal Roller Bearings

## Dual LPG Tanks

Dual 30# LPG Tanks  
w/Auto Change-over  
Regulator and Lock-able  
Security Strap

## Kitchen

Galley Overhead Cabinets w/ Shelves  
Solid Wood Doors  
Single Lever Faucet w/ Pullout Sprayer  
Counter Extension (n/a 992)  
Galley Backsplash  
Large Kitchen Skylight w/ Shade  
Tough Designer Flooring  
Double Door 7 CU FT. Fridge (LP/110-optional 12V)  
Deluxe Refrigerator Doors  
Dinette Storage Drawer  
Dinette Storage Door  
Pull-Out Pantry  
Full Extension Ball Bearing Drawer Glides  
Optional Convection Microwave Oven

## Bedroom

NW TruRest Queen Mattress  
Optional 28" - 12 Volt LCD TV  
w/ Swing Arm (Select Models)  
Optional 32" - 12 Volt LCD TV  
w/ Swing Arm (Select Models)  
Amplified TV Antenna Hookup  
Park Cable Connection  
12 Volt Outlet  
Large Wardrobe Cabinet  
Cabover Hampers w/ Struts  
Swivel Accent Reading Lights  
Mirrored Closet Doors  
Padded Headboard  
Full Wall Wardrobe Option  
FANTASTIC © Reversible, Multi-Speed Fan  
Coordinated Bedspread & Shams  
Front Storage Shelf  
Optional Camper Seat-Step

## FOX VALUE PACKAGE

2500 lb. Capacity Electric Jacks  
with Hardwire or Remote Control Operation  
plus 2nd Backup Emergency Controller  
Rear Electric Awning w/ LED Lights  
Extra Long/Deep Rear Sliding Storage Tray  
7 Gal LP Tanks (2 Stand-up)  
Dual Battery Compartment w/ Slideout Tray  
Diamond Plate Armor - Basement Siding  
Roof Access Ladder  
7" Tall Roof Rack  
Rear Exterior "Marine" Speakers  
3 Burner Hi-Output Range w/ 22" Oven (most models)  
Cold Weather Kit on Fridge  
Microwave

## Overhead Bunk Dinette



(Available in most models).

## The Long & The Short of it.

Customers often ask... 'What's the deal with 'long box/short box' designation on the 811 & 865 model Arctic Fox

A brief explanation: 'The Box' we are referring to is the truck bed.

In a short box (bed) truck, the distance from the bulk head to the rear bumper is less, so more of your camper will extend beyond the rear bumper. That extra overhang makes it possible for additional storage or for a generator compartment. A long bed (box) pickup has more of the camper inside the bed and less overhang.

See the schematic below:



**Dual Rams**  
Dual Ram Rack  
and Pinion  
Slide Assembly  
in All Slide Outs



## Dual Battery Rack

Sliding Dual Battery Tray  
Holds Two Group 29 Batteries  
420 Amp Total Capacity  
on Metal Roller Bearings



## Dual LPG Tanks

Dual 30# LPG Tanks  
w/Auto Change-over  
Regulator and Lock-able  
Security Strap

## Full Wall Wardrobe in the Bedroom



(Available in most models).

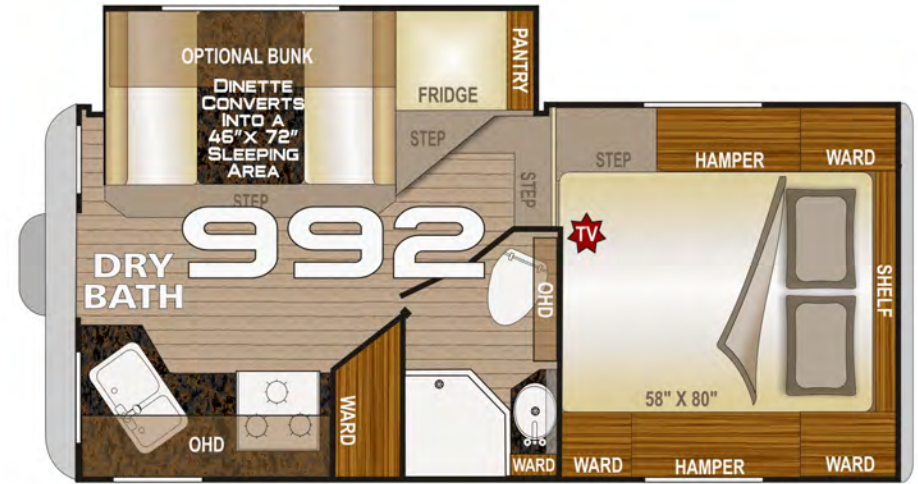
## Roll-Over Lounge



(Available in most models).



DESERT PALMS



# 992

Huge Load Capacity w/ 4" Addl. Head Room and 5" Thick Rigid Foam at the Crown  
 See the video '36 on the Roof' on the website  
 Heated Enclosed Large Capacity Holding Tanks  
 Solid Wood Cabinet Doors & Drawer Faces  
 One Piece, Laminated Fiberglass Exterior Siding  
 Rieco Titan Remote Controlled Power Jacks  
 Each Rated At 2,500 Lbs.

All Conditions 4 Season Insulation  
 Fully Welded Aluminum Frame  
 Cathedral Arch Ceiling  
 Large Storage Compartments  
 Large Battery and LPG Capacities



Here we are at Lake Shasta, California.  
 This is our first real camping trip in our new Arctic Fox 992.  
 Love, Love the camper!  
 Mike and Linda Godsil



DESERT PALMS



# 36 ON THE ROOF

When Northwood advertises a "Full Walk-On Roof" for our Arctic Fox truck campers, you not only can walk everywhere on the roof, but you could invite a couple dozen of your friends to join you!!

We tested the strength of our AF 990 full-wall slide model by loading the roof with 36 of our camper line employees.

(A good testimonial for our camper jacks, too!).



## When we say 'FULL WALK ON ROOF' we mean it!

Don't try this with your camper, especially if it's a competitor's model! Our employees are in, on and around campers all day long. Please, be safe!

**CAMPER SAFETY TIPS:** For your safety while driving, use mirrors that allow you to view past the camper to the rear on both sides. Trucks can be purchased with extended mirror options or you may purchase mirror extensions. Truck manufacturers state that you should not exceed the GVWR for the vehicle that carries your camper. The configuration of your truck will determine what size camper your vehicle can carry. A dual rear wheel truck is advisable for Arctic Fox campers. Adjustable air bags will help to level your vehicle, transfer rear axle weight forward for comfort and safety, and are recommended for all Arctic Fox applications. Some states allow passengers to ride in the camper, but it is not recommended as there are no seat belts available. When driving in any adverse weather condition it is always best to reduce your speed. The pickup should be outfitted with a durable rubber mat liner to reduce shifting while traveling. The mat will also protect the truck bed and camper from scratching while loading and unloading.

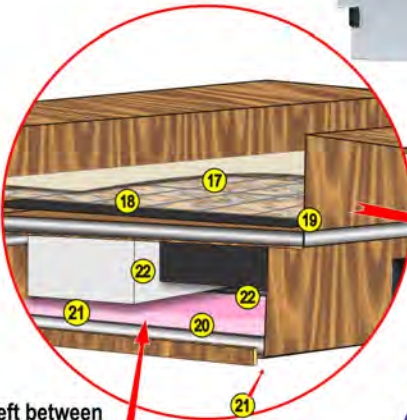
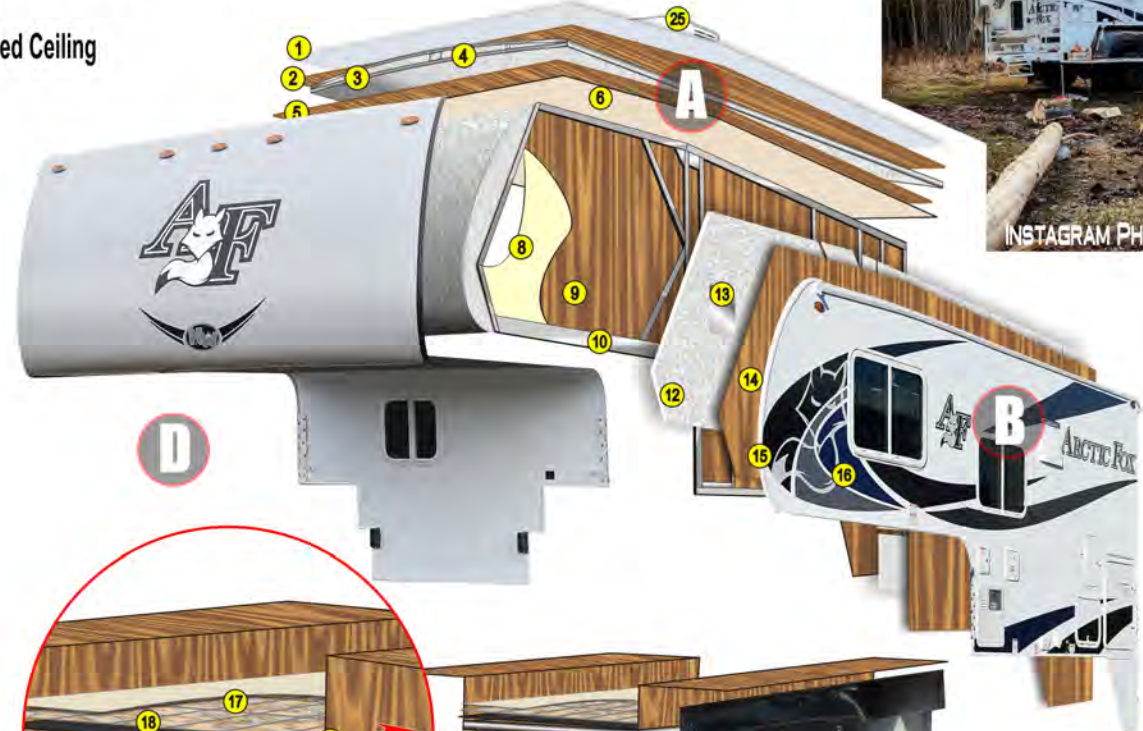
Use  **TORKLIFT** frame mounted camper tie downs for greatest safety.

SEE THE VIDEO



More About Torklift

# ABSOLUTE NORTHWOOD CAMPERS



Air space left between tanks and bottom to protect against freezing

## ROOF

- ✓ Full Walk On Roof with Vacuum Bonded Cathedral Arched Ceiling Forming an Incredibly Strong Unified Structure

## FRAME

- ✓ Thick Wall Aluminum w/Solid Anchor Blocking

## FLOORS

- ✓ Commercial Grade Linoleum, Fully Insulated
- ✓ Laminated Aluminum Floor Structure - Double Layer Luan

## CABINETS

- ✓ Wall & Ceiling Mounted, Face Frame Construction

## INSULATION

- ✓ A True 4 Season Coach

### **A** ABSOLUTE NORTHWOOD CAMPER ROOF

- 1 Heavy Gauge One Piece Roof Membrane
- 2 Luan Roof Sheathing
- 3 Arched High Density Thick Solid Block Foam
- 4 Ultra-Strong Vacu-Bonded Roof System
- 5 Interior Lamination Grade Luan Plywood
- 6 Ozite Ceiling Carpet

### **B** HIGH DENSITY ONE PIECE LAMINATED WALLS

- 8 Designer Interior Decor Finish
- 9 Lamination Grade Luan Plywood Interior Wall
- 10 Heavy Gauge Fully Welded Aluminum Superstructure
- 11 Solid Wood Fill - Full Thread Depth Anchor Blocking
- 12 Virgin 2 lb Rigid Dense Block Foam Insulation
- 13 Steel Inlaid Bonderizer Anchor Strips
- 14 Lamination Grade Luan Plywood Exterior Wall Layer
- 15 Polyurethane Hot Glue w/ Climate Controlled Application
- 16 Corona Treated High Durability Fiberglass Outer Layer

### **C** HIGH DURABILITY FLOOR STRUCTURE

- 17 Residential Quality Plush Commercial Carpeting
- 18 Commercial Grade Linoleum with 20 mil Surface
- 19 Laminated Aluminum Floor Structure - Double Layer Luan
- 20 R-7 Residential Grade Fiberglass Insulation
- 21 Laminated High Durability Moisture Barrier
- 22 Heated and Insulated Large Capacity Holding Tanks

### **D** MORE ABSOLUTE NORTHWOOD QUALITY FEATURES

- 23 Aerodynamic One-piece Fiberglass Front Cap
- 24 4 Rieco Titan Electric Jacks
- 25 11K BTU Air Conditioner
- 26 Diamond Plate Basement Walls



ARCTIC FOX IS A TRUE FOUR SEASON COACH

# ARCTIC FOX: THE BEST AVAILABLE

## *We love our 2018 Arctic Fox 811.*

A lot of research went into what our truck camper needed for us to be able to live full time in it. Bill and Ryan of Truck Camper Warehouse in West Chesterfield, NH (which is where we lived) answered all our questions, so we were able to find and create our perfect home.

On the inside, we love the warm brown tones, the ambient rope lighting, dinette slide out, storage in all available spaces, size of the appliances and just overall it has the coziness of home.

We sold our home and everything last May and became Truck Camper Living. We have traveled 10,000 miles across the country so far and had no issues with the

Arctic Fox 811. We came back to NH for the holidays and even with the cold temperatures we experienced no issues with making minor modifications.

We welcome you to check out our YouTube channel - Truck Camper Living, and see our tutorials of our Arctic Fox 811 as well as our journey. Also, find us on Facebook, Instagram and the web at <http://www.truckcamperliving.net>

As far as we are concerned Arctic Fox is the best truck camper available with its solid construction, attention to details and insulation values. We hope to see you along our journey...

Elaine & Arnie Croteau  
Truck Camper Living LLC



PHOTOS BY RICHARD HICKS

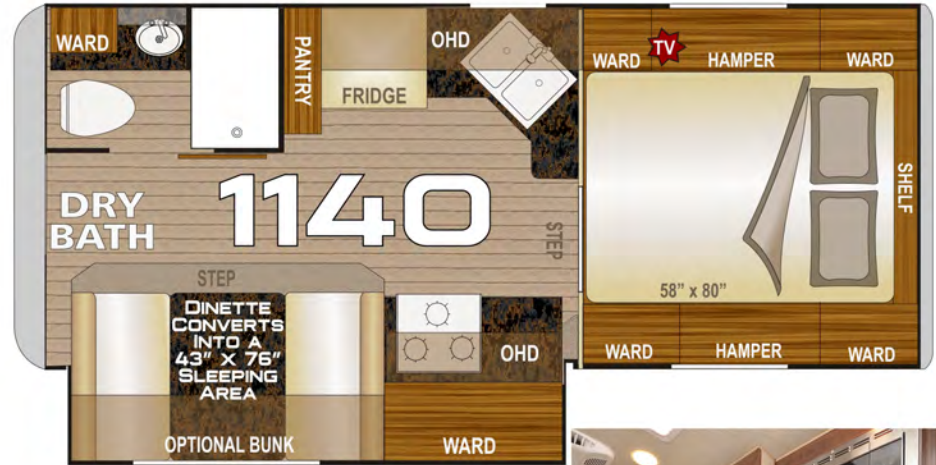


ELAINE & ARNIE CROTEAU

Customer photos and testimonials do not necessarily reflect the views or recommendations of Northwood Manufacturing

# 1140

- Welded Aluminum Frame
- Huge Load Capacity w/ 4" Additional Head Room and 5" Thick Rigid Foam at the Crown of the Cathedral Arch Ceiling
- Large Capacity Holding Tanks
- Large Capacity Storage Compartments
- Large Battery and LPG Capacities
- Solid Wood Cabinet Doors And Drawer Faces
- One Piece, Laminated Fiberglass Exterior Siding
- Rieco Titan Remote Controlled Power Jacks Each Rated At 2,500 Lbs.
- All Conditions 4 Season Insulation Package w/ Enclosed Heated Holding Tanks



WET BATH

WINDSWERT SERENITY



At the Arctic Circle with our Arctic Fox

PHOTOS & ADVENTURES BY BRETT BINNS



The Badlands NP, South Dakota.



We loved our 2011 AF 1150 Dry bath and had the opportunity to upgrade to a new one this summer...love all the upgrades and changes over the last few years you have made. This picture is at Morrow County OHV in September -Elliot P Groeneveld

# FOX TALK



SUNRISE AT GREEN SWAMP, FLORIDA

We bought our first truck camper with the intention of traveling to Alaska and selling it upon our return to the lower 48 States. However, our experience with the truck camper was so good that we decided to make it our summer travel camping vehicle. In September 2018, we traded in our first truck camper for our Arctic Fox 990. Among the reasons we chose to change units are Arctic Fox's 4 Season Package, the location of the slide room on the 990, and the ability to access the camper with the slide in.

Our summer journey usually starts in early April and ends some time around Halloween, and we average over 20,000 miles. Because of the ease of travel and finding campsites

while using our truck camper, we have a general idea of where we're heading for the day, but can easily change direction and plans as something else draws our interest. Our camper is also used during the winter season as we are snowbirds in Florida and go off on weekend excursions with friends from time to time.

Jodie & Chuck Ramsey



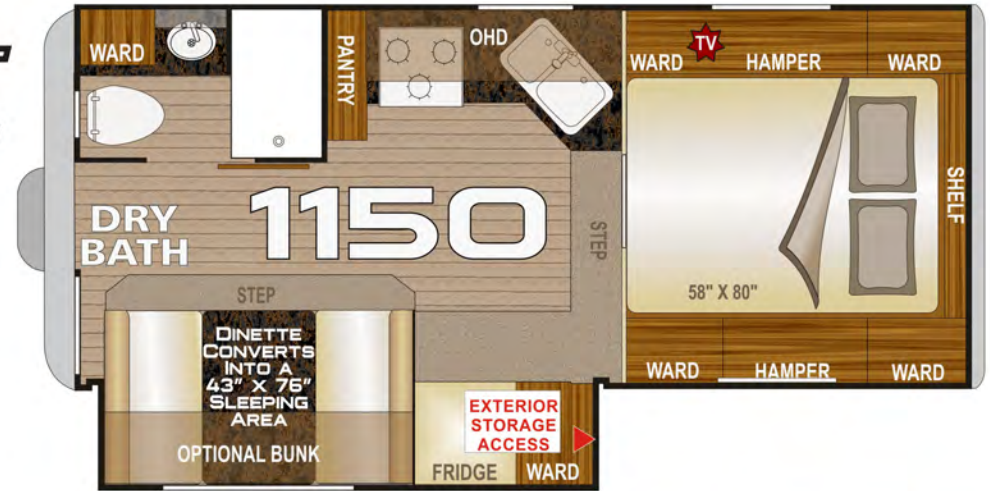
PORTLAND HEAD LIGHT, CAPE ELIZABETH, MAINE

# ARCTIC FOX

- Welded Aluminum Frame
- Huge Load Capacity w/ 4" Additional Head Room and 5" Thick Rigid Foam at the Crown of the Cathedral Arch Ceiling
- Large Capacity Holding Tanks
- Large Capacity Storage Compartments
- Large Battery and LPG Capacities
- Solid Wood Cabinet Doors And Drawer Faces
- One Piece, Laminated Fiberglass Exterior Siding
- Rieco Titan Remote Controlled Power Jacks Each Rated At 2,500 Lbs.
- All Conditions 4 Season Insulation Package w/ Enclosed Heated Holding Tanks



## 1150



DRY BATH



DESERT PALMS



DESERT PALMS



I was asked by Truck Camper Magazine to contact you because you had seen my entries into the Calendar Contest. Here are some photos. I have used our camper extensively this year and have had nothing but great things to say about your product.

Bryan H.  
Zimmerman, MN



## AVAILABLE OPTIONS

Some of these options are not available in all models.  
Please see your dealer for specific option availability in certain models.

- |                                |                                      |
|--------------------------------|--------------------------------------|
| 19" 12v LED TV (select models) | Swing Out Brackets                   |
| 28" 12v LED TV (select models) | 76" Roll-over Lounge                 |
| 32" 12v LED TV (select models) | Full Wall Ward Curb Side             |
| Thermal Pane Windows           | 3-Way 7 cu ft Dbl Door Refer         |
| Arctic Fox Camper Seat-Step    | 11K BTU Air Conditioner              |
| Fox Landing                    | 3 Burner Cooktop                     |
| Pull Out Mid Step              | Aussie Grill w/ Bracket              |
| Addl. Fox Landing steps        | Convection Oven (Replaces Microwave) |
| 2.5 Onan LP Generator          | 24" Add-a-Step                       |
| 100 Watt Solar Panel           | 10' Side Box awning                  |
| 170 Watt Solar Panel           | Slide OutTopper                      |
| Winegard Carryout G2+ Sat      | 8 Cubic Foot Dbl Door Fridge (1140)  |
| Wet Bath - (some models)       | Rear View Camera                     |
| Overhead Bunk In Dinette       | Gateway Router                       |



I've camped throughout southwestern United States and Alaska, with and without my horses but always with my camper. I just love that I can have the comforts of home and yet squeeze into the most inviting of places. And inside, my Arctic Fox is roomy. There is plenty of space for a couple of people and my large dog.

I have been interested in an Arctic Fox camper for a long time but several years ago dismissed it because in my research it appeared that all Arctic Foxes had slide outs. I didn't want a slide out and so I settled for another brand that didn't have one.

I was very disappointed in that particular camper. Then last winter while camping at a horse motel, I got to know a woman who had an Arctic Fox with a slide out. She mentioned that Arctic Fox does have a model without a slide out. I was thrilled and started looking for one immediately. It didn't take long to find one and it is just perfect. The quality of these campers is so impressive. This is my fifth camper. It is the best made of all of them; it has more storage; the layout has been well thought out. I am now a happy camper!

Charmi W. Show Low, Az.

Customer photos and testimonials do not necessarily reflect the views or recommendations of Northwood Manufacturing

# ARCTIC FOX

## TRUCK CAMPERS

### A LEGACY OF QUALITY



## VALUE PACK

Fox Value Pack is a mandatory option bundle that includes all of the following high value features:

- Electric Rear Awning w/ LED Lights
  - Sliding Battery Tray
  - 2500 # Capacity Electric Jacks
  - Dual 30 lb. LP Tanks
  - Exterior "Marine Speakers"
  - Roof Rack and Ladder
  - Rear Sliding Storage Tray
  - Diamond Plate Armor- Basement Siding
  - Large 22" Oven (Most Models)
  - Microwave Oven
  - LP/110 - 7 Cu Ft Dbl Door Refrigerator
  - Pull-Out Pantry (Most Models)
  - Deluxe Refrigerator Doors
  - Fantastic Fan® - Multi-Speed/Reversible
  - TV Antenna w/ WiFi Extender
  - Dinette Storage Door
  - Dinette Storage Drawer
  - Bedsprad/Shams
  - Bedroom Front Shelf
- Weight: 595 lbs.

## OPTION WEIGHTS

Approximate weight of specific additional features:

Feature	Est. Weight	
	Lbs.	Kgs.
Weight Unit of Measure	40	18
OHD Bunk	21	10
Swing Out Brackets	90	41
11M BTU Air Cond.	32	15
Solar Panel 100W	42	20
Solar Panel 170W	63	29
Side Box Awning	25	11
Generator Ready	78	35
Generator	22	10
Barbeque	30	14
One Battery	458	208
Typical Water Full (11.3 Lbs/Gal)	60	27
Propane Full	49	23
Bumper	24	11
Fox Landing	20	9
TV w/Bracket	5	3
12V Power Awning (Unit)		

Use these figures to estimate the total weight of the coach with added options:  
Camper Weight + All Options

## ITEMS INCLUDED IN UNIT WEIGHT ESTIMATION

All Unit Weights Include All of The Following Features Below:

- Fiberglass Exterior; Heavy-Duty Camper Tie Downs;
- Exterior Rinse Station; 20 K BTU Auto Ignition Furnace with Thermostat Control;
- 58"x 80" Tru-Rest Comfort Mattress;
- Pre-wire for Solar and Satellite;
- Pre-wire for TV Antenna;
- Pre-wire for Microwave Oven;
- Pre-wire for Air Conditioner;
- Large 3 Burner Range; Range Cover;
- Range Hood w/ Light and Exhaust Fan; DSI Gas Electric Water Heater w/ Insulated Porcelain Tank;
- Water Heater By-pass Valve; Semi-Automatic Winterization System; Night/Privacy Shades; Galley Skylight w/Shade; 25 Watt Speakers; Fire Extinguisher; LPG Leak, Smoke and CO Detectors.

**\*All dry weights are calculated before adding options.** Verify the load capacity of your vehicle. If you don't know or aren't sure, you should ask your automotive dealership or contact your vehicle manufacturer.

All weights above are average approximations and may vary. Specifications are subject to change without notice.

## Approximate Overall Weight and Measure Specifications For Arctic Fox Campers:

Description	Arctic Fox Truck Campers					
	865	811	990	992	1140	1150
Model Number	865	811	990	992	1140	1150
Dry Weight Lbs.	2641	2873	3010	3235	3465	3358
Dry Weight Kgs.	1198	1303	1365	1467	1571	1523
Width	8'1"	8'1"	8'1"	8'1"	8'1"	8'1"
Exterior Height	8'7"-10'0"w/AC	8'7"-10'0"w/AC	8'7"-10'0"w/AC	8'7"-10'0"w/AC	8'7"-10'0"w/AC	8'7"-10'0"w/AC
Interior Height	6'7"	6'7"	6'7"	6'7"	6'7"	6'7"
Floor Length	9'4"	9'0"	9'10"	10'2"	11'4"	11'4"
Overall Length	17	16'8"	17'6"	17'10"	19'0"	19'0"
Fresh Water w/Water Heater	42	50	59	46	59	59
Gray Water	32	38	39	39	35	35
Black Water	31	23	43	37	43	43
LPG Capacity (approx. gallons)	14	14	14	14	14	14
Auto Ignition Furnace ( 1000 BTU's)	20	20	20	20	20	20

Weights include slide-out (if applicable). Some options are not included in the weights displayed. See the list of features that are included in the calculation table.

Your Northwood Dealer

Updated Sept 2020