



Arctic Fox
Campers



Arctic Fox

Quality By Design

www.northwoodmfg.com

*Quality Construction, Distinctive Design,
Full Wall Truck Campers Done Right.*



Three Interiors to Choose From.



Elegant Truffle Interior



Solitaire Azul Interior



Early Autumn Interior

Arctic Fox Campers



Non-Slide

- Welded Aluminum Frame
- Residential Bathroom Features
- Large Capacity Holding Tanks
- Large Capacity Storage Compartments
- Large Battery and LPG Capacities
- Solid Wood Cabinet Doors And Drawer Faces
- One Piece, Laminated Fiberglass Exterior Siding
- 3" Crown Roof With Extreme Load Bearing Capacity
- Rieco Titan Remote Controlled Power Jacks Each Rated At 2,500 Lbs.
- All Conditions 4 Season Insulation Package W/ Enclosed Heated Holding Tanks



Long & Short Box Option Available

865



Early Autumn Interior



Early Autumn Interior



Early Autumn Interior

Arctic Fox Campers

- Welded Aluminum Frame
- Cathedral Arch Ceiling - Huge Load Capacity w/ 4" Addl. Head Room & 5" Thick at Crown
- Large Capacity Holding Tanks
- Large Capacity Storage Compartments
- Large Battery and LPG Capacities
- Solid Wood Cabinet Doors And Drawer Faces
- One Piece, Laminated Fiberglass Exterior Siding
- Rieco Titan Remote Controlled Power Jacks Each Rated At 2,500 Lbs.
- All Conditions 4 Season Insulation Package w/ Enclosed Heated Holding Tanks



Long & Short Box Option Available
(Generator only available in Short Box Campers)

811



Early Autumn Interior



Solitaire Azul Interior



Solitaire Azul Interior

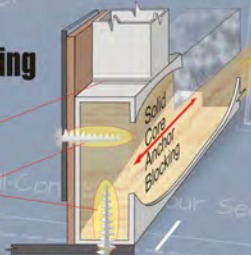
Aluminum Superstructure & Solid Core Blocking

Aluminum Superstructure with Solid Core Anchor Blocking
Anchor blocking gives substantial strength at main connection points.



Solid Core Anchor Blocking

CONTINUOUS BEAD WELDS
ALL THREADS ARE SECURING THE FASTENER



other brands

SPOT WELDS
WEAKER JOINTS
WEAKER ANCHOR SCREWS
ONLY ONE OR TWO THREADS ARE SECURING THE FASTENER



Structural Aluminum Basement Floor Frame

'Big' holding tanks require a 'Big' floor structure...

That's the Arctic Fox Basement Floor!

Thick wall aluminum basement floor joists support our holding tanks under the basement of every Arctic Fox Truck Camper.



Absolute Northwood

"Where Quality is Everyone's Responsibility"



Our Commitment to
Quality Strength Durability



"The Ultimate Back Porch"

FOX LANDING

Manufactured *Exclusively* for NORTHWOOD Mfg.



The **FOX LANDING** offers a large entry platform, convenient fold away stairs and an intermediate step for easy access. The stairway can be installed to the left or right of the landing and the platform folds up out of the way for travel or when hitching your boat or trailer. Check it out!

- * 4 Equal Height Steps
- * Mid Step (Between Bumper & Threshold)
- * Wide Bumper
- * Left or Right Hand Accessible
- * Steps Fold Up in Seconds
- * Single Pin Locks Into Position
- * ...Exclusively in Northwood Campers!!!

Please Note:
The Mid Step is an option when adding a Fox Landing to a previously purchased camper.



1. Steps in the down position.



2. Treads fold up....



3. Landing folds up, and pin locks it into place

Solid Wood Cabinetry

...that is mounted to the Walls and the Ceiling



By using solid wood face frame construction and then integrating the cabinet with the structure of the ceiling and walls, our coaches and our cabinets are both made stronger.

4 Season All Weather Camper



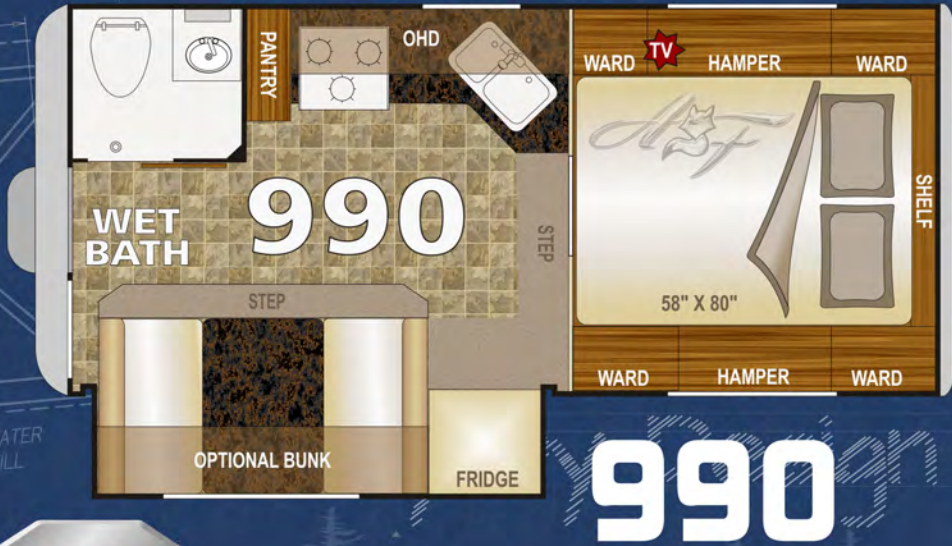
Heated Holding Tank Area

Our fully enclosed, insulated and heated holding tank area circulates air around the suspended tanks providing the best protection from freezing. All our dump valves are also enclosed and heated to ensure smooth operation, even in cold northern climates.

Arctic Fox Campers



- Welded Aluminum Frame
- Cathedral Arch Ceiling - Huge Load Capacity w/ 4" Addl. Head Room & 5" Thick at Crown
- Large Capacity Holding Tanks
- Large Capacity Storage Compartments
- Large Battery and LPG Capacities
- Solid Wood Cabinet Doors And Drawer Faces
- One Piece, Laminated Fiberglass Exterior Siding
- Rieco Titan Remote Controlled Power Jacks Each Rated At 2,500 Lbs.
- All Conditions 4 Season Insulation Package w/ Enclosed Heated Holding Tanks



Elegant Truffle Interior



Autumn Interior



Elegant Truffle Interior

122 REASONS TO BUY AN ARCTIC FOX CAMPER

Construction

Aluminum Superstructure
Welded Aluminum Framing (.060" - .125")
Solid Fill Anchor Blocking
2 lb. Virgin Block Foam Insulation
Full Walk-On Roof
Cathedral Arch Ceiling - 5" Thick at Crown
w/ Huge Load Capacity and Insulation Rating
Thick Seamless One Piece Roof Membrane
Transverse Floor Maximizes Floor Space
Continuous 1 Piece Fiberglass Cabover
Rack and Pinion Slide Out Mechanism

Exterior

LED Running Lights
LED Tail Lights - Recessed Automotive Style
Large 1" Thick, Insulated Compartment Doors
Metal Latches, Catches, and Pulls
Automotive Bulb Seals Around All Doors
12V Light in Valve Compartment
Removable 110V Power Cord (30' Length)
Outdoor High Pressure Rinse Station
5/8" Steel Gas Manifold
Diamond Plate Armor Above Bumper
Entry Door w/ 2 View Windows
Aluminum Bumper w/ Dual Access
3 Position Bumper Step Mount
Entry Door/ Patio Light
Exterior Convenience Light (Non-slide Side)
Black Tank Flush
Exterior 110 Volt Outlets (GFI Protected)
TV Antenna/ HD/ w/Signal Amplifier
Rain Gutters and Large Drip Spouts
LP Hookup for BBQ
Torque Windows
80/20 Window Tint
Safety Glass Windows
Thermal Pane Window Option
Optional 2500 W Onan Cummins Generator
12 Volt Power Awning Option
Optional Fox Landing

Interior

Solid Wood Cabinetry
Face Frame Cabinet Construction
3 Interior Color Décor Choices
AM/FM Bluetooth CD Player w/ 6 Speakers
Adjustable Rheostat Controlled Lights (5)
Recessed LED Lighting
Wood Trim Accents
Ceiling Carpet Liner

2 LED Strip Lights
Night/Privacy Shades
Direct Spark Ignition LP/110 Water Htr
Adjustable Heat Vents
Systems Monitor Panel
12 Volt Disconnect Switch
8 - 110 Volt Outlets (9 in Dry Bath Models)
Large Capacity Holding Tanks
Enclosed Heated Holding Tanks
Enclosed Water Heater Termination Valves
Pre-Wired for Solar Panel
Pre-Wired for Satellite Receiver
Power Converter with Charger
Charge Wizard © Battery Maint. System
Generator Ready (Most Models)
Generator Transfer Switch (Most Models)
Optional Carpet Kit (n/a 996 & 992)
20K Auto Ignition Furnace
Storage Step into Cab Over

Slide Out

All Dinettes are Full Wall Slideouts
26" Deep Slide (Most Models)
Oversized Dinette Window
Dream Dinette
Longer/Wider Dinette Table
Dinette Converts to 43"x 76" Bed (Most Models)
4 Seals on Slide-Out
Below Seat Storage
High Density Foam Seat Cushions
Optional Fold Down Ohd Bunk w/ Pad
Below Step Storage

Bathroom

Fiberglass Shower Stall (Wet Bath Only)
Bathroom Skylight
Vanity Cabinet & Mirror
Freeze Resistant Waterlines
Marine Grade Toilet

Aluminum Superstructure



Kitchen

Galley Overhead Cabinets w/ Shelves
Solid Wood Doors
Single Lever Faucet w/ Pullout Sprayer
Counter Extension (n/a 996 & 992)
Galley Backsplash
Large Kitchen Skylight w/ Shade
Tough Designer Flooring

Double Door 6 CU FT. Fridge (LP/110-optional 12V)
Deluxe Refrigerator Doors
Dinette Storage Drawer
Dinette Storage Door
Pull-Out Pantry
Full Extension Ball Bearing Drawer Glides
Optional Convection Microwave Oven

Bedroom

NW-TruRest Queen Mattress
Optional 19" - 12 Volt LCD TV
w/ Swing Arm
Amplified TV Antenna Hookup
Park Cable Connection
12 Volt Outlet
Large Wardrobe Cabinet
Cabover Hampers w/ Struts
Swivel Accent Reading Lights
Mirrored Closet Doors
Padded Headboard
Full Wall Wardrobe Option
FANTASTIC © Reversible, Multi-Speed Fan
Coordinated Bedspread & Shams
Front Storage Shelf
Optional Camper Seat-Step

FOX VALUE PACKAGE

2500 lb. Capacity Electric Jacks
with Hardwire or Remote Control Operation
plus 2nd Backup Emergency Controller
Large Rear Awning (7' x 8')
Extra Long/Deep Rear Sliding Storage Tray
7 Gal LP Tanks (2 Stand-up)
Dual Battery Compartment w/ Slideout Tray
Diamond Plate Armor - Basement Siding
Roof Access Ladder
7" Tall Roof Rack
Rear Exterior "Marine" Speakers
3 Burner Hi-Output Range w/ 22" Oven (most models)
Microwave

The Long & The Short of it.

Customers often ask... 'What's the deal with 'long box/short box' designation on the 811 & 865 model Arctic Fox campers?'

A brief explanation: 'The Box' we are referring to is the truck bed.

In a short box (bed) truck, the distance from the bulk head to the rear bumper is less, so more of your camper will extend beyond the rear bumper. That extra overhang makes it possible for additional storage or for a generator compartment. A long bed (box) pickup has more of the camper inside the bed and less overhang.

See the schematic below:



Dual Rams
Dual Ram Rack
and Pinion
Slide Assembly
in All Slide Outs



Dual Battery Rack

Sliding Dual Battery Tray
Holds Two Group 29 Batteries
420 Amp Total Capacity
on Metal Roller Bearings

Dual LPG Tanks

Dual 30# LPG Tanks
w/Auto Change-over
Regulator and Lock-able
Security Strap



Overhead Bunk Dinette

(Available in most models)



Full Wall Wardrobe in the Bedroom

(Available in most models)



Roll-Over Lounge

(Available in most models)

Arctic Fox Campers

- Welded Aluminum Frame
- Cathedral Arch Ceiling - Huge Load Capacity w/ 4" Addl. Head Room & 5" Thick at Crown
- Large Capacity Holding Tanks
- Large Capacity Storage Compartments
- Large Battery and LPG Capacities
- Solid Wood Cabinet Doors And Drawer Faces
- One Piece, Laminated Fiberglass Exterior Siding
- Rieco Titan Remote Controlled Power Jacks Each Rated At 2,500 Lbs.
- All Conditions 4 Season Insulation Package w/ Enclosed Heated Holding Tanks



992



Early Autumn Interior



Solitaire Azul Interior



Solitaire Azul Interior

SILVER
NEW
36
ON THE
ROOF

Summer 2015

New Cathedral Arched Ceiling

Now With Four Inches Of Additional Head Room



When Northwood advertises a "Full Walk-On Roof" for our Arctic Fox truck campers, you not only can walk everywhere on the roof, but you could invite a couple dozen of your friends to join you!!

We tested the strength of our AF 990 full-wall slide model by loading the roof with 36 of our camper line employees.

(A good testimonial for our camper jacks, too!).

SEE THE VIDEO




When we say 'FULL WALK ON ROOF' we mean it!

Don't try this with your camper, especially if it's a competitors model! Our employees are in, on and around campers all day long. Please, be safe!

CAMPER SAFETY TIPS: For your safety while driving, use mirrors that allow you to view past the camper to the rear on both sides. Trucks can be purchased with extended mirror options or you may purchase mirror extensions. Truck manufacturers state that you should not exceed the GVWR for the vehicle that carries your camper. The configuration of your truck will determine what size camper your vehicle can carry. A dual rear wheel truck is advisable for Arctic Fox campers. Adjustable air bags will help to level your vehicle, transfer rear axle weight forward for comfort and safety, and are recommended for all Arctic Fox applications. Some states allow passengers to ride in the camper, but it is not recommended as there are no seat belts available. When driving in any adverse weather condition it is always best to reduce your speed. The pickup should be outfitted with a durable rubber mat liner to reduce shifting while traveling. The mat will also protect the truck bed and camper from scratching while loading and unloading.



Use  **TORKLIFT** frame mounted camper tie downs for greatest safety.

More About Torklift

www.northwoodmfg.com

ABSOLUTE NORTHWOOD



✓ Our Commitment to
Quality
Strength
Durability



ROOF

- ✓ Full Walk On Roof with Vacuum Bonded Cathedral Arched Ceiling Forming an Incredibly Strong Unified Structure

FRAME

- ✓ Thick Wall Aluminum w/Solid Anchor Blocking

FLOORS

- ✓ Commercial Grade Linoleum, Fully Insulated
- ✓ Laminated Aluminum Floor Structure - Double Layer Luan

CABINETS

- ✓ Wall & Ceiling Mounted, Face Frame Construction

INSULATION

- ✓ A True 4 Season Coach

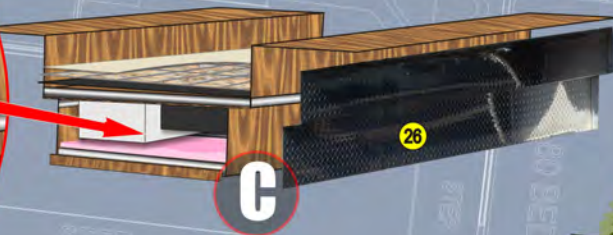
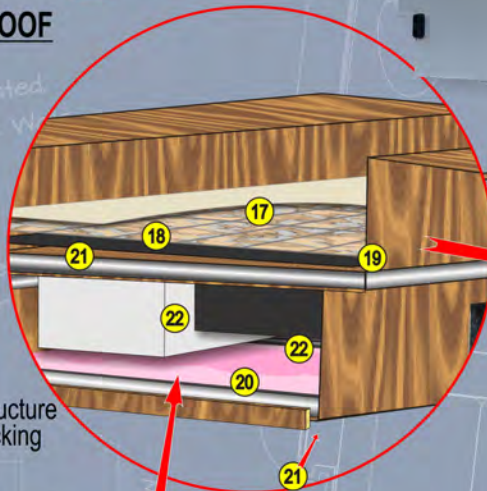


A ABSOLUTE NORTHWOOD CAMPER ROOF

- 1 Heavy Gauge One Piece Roof Membrane
- 2 Luan Roof Sheathing
- 3 Arched High Density Thick Solid Block Foam
- 4 Ultra-Strong Vacu-Bonded Roof System
- 5 Interior Lamination Grade Luan Plywood
- 6 Ozite Ceiling Carpet

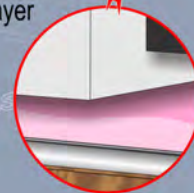
B HIGH DENSITY ONE PIECE LAMINATED WALLS

- 8 Designer Interior Decor Finish
- 9 Lamination Grade Luan Plywood Interior Wall
- 10 Heavy Gauge Fully Welded Aluminum Superstructure
- 11 Solid Wood Fill - Full Thread Depth Anchor Blocking
- 12 Virgin 2 lb Rigid Dense Block Foam Insulation
- 13 Steel Inlaid Bonderizer Anchor Strips
- 14 Lamination Grade Luan Plywood Exterior Wall Layer
- 15 Polyurethane Hot Glue w/ Climate Controlled Application
- 16 Corona Treated High Durability Fiberglass Outer Layer



C HIGH DURABILITY FLOOR STRUCTURE

- 17 Residential Quality Plush Commercial Carpeting
- 18 Commercial Grade Linoleum with 20 mil Surface
- 19 Laminated Aluminum Floor Structure - Double Layer Luan
- 20 R-7 Residential Grade Fiberglass Insulation
- 21 Laminated High Durability Moisture Barrier
- 22 Heated and Insulated Large Capacity Holding Tanks



Air space left between tanks and bottom to protect against freezing

Arctic Fox is a True Four Season Coach



D MORE ABSOLUTE NORTHWOOD QUALITY FEATURES

- 23 Aerodynamic One-piece Fiberglass Front Cap
- 24 4 Rieco Titan Electric Jacks
- 25 11K BTU Air Conditioner
- 26 Diamond Plate Basement Walls

We enjoy our travels in our Arctic Fox 1140 camper. We love the fact that we can camp off grid and very seldom stay in a campground.

We have 300 watts of solar on the roof and with the size of our tanks we last about 10 days until we have to dump and refill our tanks. With the solar power and the low power usage of the camper's led lights we generally have full batteries by night fall. This summer we went for 70 days without plugging into power or running our generator, just using solar power. Our summer trip was mainly in Montana, Wyoming and Utah.

With our camper we are able to get into more places and stay longer without the need to find power or campgrounds.

2015 Arctic Fox 1140
Russ & Gretchen Berquam



Canada and Prince Edwards Island



Our summer trip - Mostly Montana, Wyoming and Utah... In the Red Canyon area.



Burr Trail from Bolder to Capitol Reef NP



We have had 3 Truck Campers and we have enjoyed them so much. Our first had no slide...then around 2013 we traded it in and bought a Lemon... every time we took it out we would come back and spend a month fixing something... Finally trade it off and got \$500 on the trade in for a 2007 Arctic Fox-990.

The queen of our truck Camper experience is the AF-990, even though this one has had a rough life, from what I know, we are the third owner of it, but we have enjoyed the Fox a lot!
...and we love the big wardrobe.



James & Dominga Tedford



I love my Arctic Fox 990 as I can go anywhere and just camp out for a week or so out in the boonies. Quartzsite, AZ BML Long Term Visitor Area (LTVA)
Frank Poole



fpoole © poolesweb.com

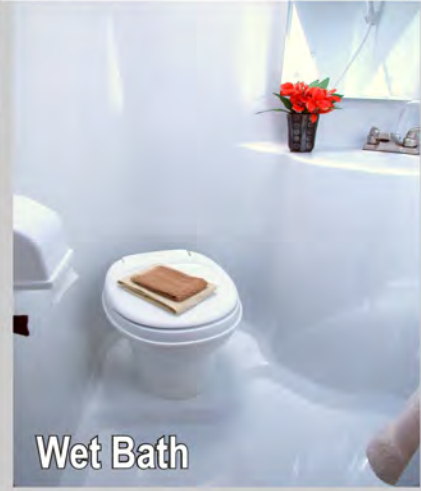
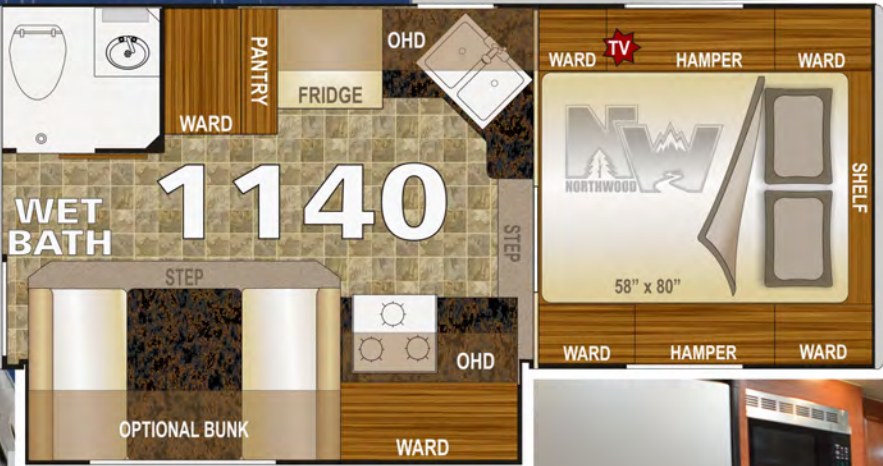


Arctic Fox Campers

- Welded Aluminum Frame
- Cathedral Arch Ceiling - Huge Load Capacity w/ 4" Addl. Head Room & 5" Thick at Crown
- Large Capacity Holding Tanks
- Large Capacity Storage Compartments
- Large Battery and LPG Capacities
- Solid Wood Cabinet Doors And Drawer Faces
- One Piece, Laminated Fiberglass Exterior Siding
- Rieco Titan Remote Controlled Power Jacks Each Rated At 2,500 Lbs.
- All Conditions 4 Season Insulation Package w/ Enclosed Heated Holding Tanks



1140





Our Arctic Fox TC and Strider, our F350 SD, at the Arctic Circle

Castle Mountain
Bow River Parkway, Banff National Park
Alberta Canada



Our (rather dirty) truck camper on the Denali Highway



Our truck and truck camper The Badlands Badlands NP, South Dakota



Our campsite this evening. Musreau Lake Provincial Park Campground Grande Prairie, Alberta, Canada

Photos & Adventures by Brett Binns



We had another camper for two years, but the dinette was small, just under 6' and was only 18" deep. When we saw the 990 Arctic Fox with the full wall slide, the 26" slide depth, the closet space and the extra counter space, that was all it took. We stepped up to the 1150 since we have a dually pickup. I found one on the internet and drove all the way to Boise from Colorado to pick it up. We are happy with the Arctic Fox and this will be our third winter in it down in southern Arizona. Last year while boon docking with our ATV's for 80 days we only spent 62 dollars for camping and or dumping the tanks. As far as the camper... it's great! Frank Niehus Elbert Co.



In a 2 year period I spent 182 nights in an Arctic Fox Truck camper. I started with a 990 then switched it for a 992. It's amazing what you will discover by living in your own product. It's the little things you discover. As a result of my 'campouts', we've added a bigger dinette window, the dream dinette, a light in the dump valve area, clear glass in the rear entry door and many more improvements. I know these campers inside and out!



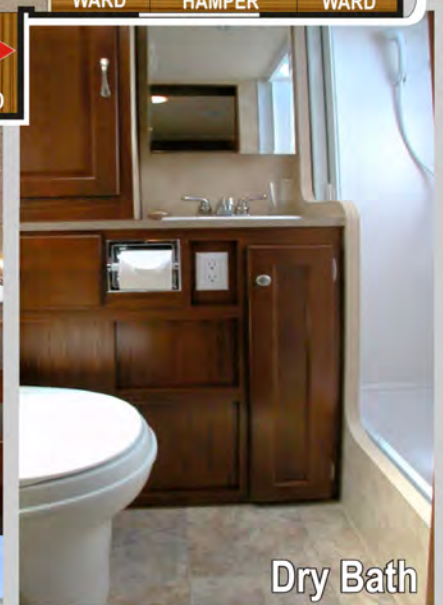
Doug Karr "The Camper Guy"

Arctic Fox Campers

- Welded Aluminum Frame
- Cathedral Arch Ceiling - Huge Load Capacity w/ 4" Addl. Head Room & 5" Thick at Crown
- Large Capacity Holding Tanks
- Large Capacity Storage Compartments
- Large Battery and LPG Capacities
- Solid Wood Cabinet Doors And Drawer Faces
- One Piece, Laminated Fiberglass Exterior Siding
- Rico Titan Remote Controlled Power Jacks Each Rated At 2,500 Lbs.
- All Conditions 4 Season Insulation Package w/ Enclosed Heated Holding Tanks



1150



Dry Bath



Solitaire Azul Interior



Solitaire Azul Interior

You're 'Free to Roam' in an Arctic Fox Camper.

I've always thought the Arctic Fox was a quality camper; I like the aluminum frame, the 4 season insulation and features like the solar panels, A/C, propane genset and spacious, quality interior. When we bought our 1150 at the end of June our first trip a week later was to go from NY to Vernal Utah for the July 4th POW WOW for the Ute Indian reservation...

We now have been using it every year to go to Arizona and stay at some remote places in the desert... I tend to be pretty adventurous with my Camper!
David & Lila Weinstein

Available Options

Some of these options are not available in all models. Please see your dealer for specific option availability in certain models.

- AM/FM CD/DVD Player w/Bluetooth
- Rear Electric Awning
- 19" 12v LED TV
- Thermal Pane Windows
- Arctic Fox Camper Seat-Step
- Fox Landing
- Pull Out Mid Step
- Addl. Fox Landing steps
- 2.5 Onan LP Generator
- 60 Watt Solar Panel
- 100 Watt Solar Panel
- Winegard Carryout G2+ Sat
- Wet Bath - (some models)
- Overhead Bunk In Dinette
- 76" Roll-over Lounge
- Full Wall Ward Curb Side
- 11K BTU Air Conditioner
- 3 Burner Cooktop
- Aussie Grill w/ Bracket
- Convection Oven (Replaces Microwave)
- 24" Add-a-Step
- 10' Side Box awning
- Slide Out Topper
- 8 Cubic Foot Dbl Door Fridge (1140)



www.northwoodmfg.com

Customer photos and testimonials do not necessarily reflect the views or recommendations of Northwood Manufacturing

Value Pack

Fox Value Pack is a mandatory option bundle that includes all of the following high value features:

Rear Awning
Sliding Battery Tray
2500 # Capacity Electric Jacks
Dual 30 lb. LP Tanks
Exterior "Marine Speakers"
Roof Rack and Ladder
Rear Sliding Storage Tray
Diamond Plate Armor- Basement Siding
Large 22" Oven (Most Models)
Microwave Oven
LP/110 - 6 Cu Ft Dbl Door Refrigerator
Pull-Out Pantry (Most Models)
Deluxe Refrigerator Doors
Fantastic Fan® - Multi-Speed/Reversible
TV Antenna
Dinette Storage Door
Dinette Storage Drawer
Beds/Spread/Shams
Bedroom Front Shelf

Weight: 595 lbs.

Option Weights

Approximate weight of specific additional features:

Feature	Est. Weight	
	Lbs.	Kgs.
Weight Unit of Measure		
OHD Bunk	40	18
Swing Out Brackets	21	10
11M BTU Air Cond.	90	41
Solar Panel 60W	22	10
Solar Panel 100W	32	15
Side Box Awning	63	29
Generator Ready	25	11
Generator	78	35
Barbeque	22	10
One Battery	30	14
Typical Water Full (8.3 Lbs/Gal)	458	208
Propane Full	60	27
Bumper	49	23
Fox Landing	24	11
TV w/Bracket	20	9
12V Power Awning (Unit)	5	3

Use these figures to estimate the total weight of the coach with added options:
Camper Weight + All Options

Items Included In Unit Weight Estimation

All Unit Weights Include All of The Following Features Below:

Fiberglass Exterior; Heavy-Duty Camper Tie Downs; Exterior Rinse Station; 20 K BTU Auto Ignition Furnace with Thermostat Control; 58"x 80" Pillow Top Inner Spring Mattress; Pre-wire for Solar and Satellite; Pre-wire for TV antenna; Pre-wire for microwave oven; Pre-wire for Air Conditioner; Large 3-burner Range; Range Cover; Range Hood w/ Light and Exhaust Fan; DSI Gas Electric Water Heater with Insulated Porcelain Tank; Water Heater By-pass Valve; Semi-Automatic Winterization System; Night/Privacy Shades; Galley Skylight w/Shade; 25 Watt Speakers; Fire Extinguisher; LPG Leak, Smoke and CO Detectors.

***All dry weights are calculated before adding options.** Verify the load capacity of your vehicle. If you don't know or aren't sure, you should ask your automotive dealership or contact your vehicle manufacturer. All weights above are average approximations and may vary. Specifications are subject to change without notice.

Arctic Fox

Arctic Fox
Campers



Approximate Overall Weight and Measure Specifications For Arctic Fox Campers:

Description	Arctic Fox Truck Campers					
	865	811	990	992	1140	1150
Model Number	865	811	990	992	1140	1150
Dry Weight Lbs.	2641	2873	3010	3235	3465	3358
Dry Weight Kgs.	1198	1303	1365	1467	1571	1523
Width	8'1"	8'1"	8'1"	8'1"	8'1"	8'1"
Exterior Height	8'7"-9'10"w/AC	8'7"-9'10"w/AC	8'7"-9'10"w/AC	8'7"-9'10"w/AC	8'7"-9'10"w/AC	8'7"-9'10"w/AC
Interior Height	6'7"	6'7"	6'7"	6'7"	6'7"	6'7"
Floor Length	9'4"	9'0"	9'10"	10'2"	11'4"	11'4"
Overall Length	17	16'8"	17'6"	17'10"	19'0"	19'0"
Fresh Water w/Water Heater	34	50	59	46	59	59
Gray Water	32	38	39	39	35	35
Black Water	31	23	43	37	43	43
LPG Capacity (approx. gallons)	14	14	14	14	14	14
Auto Ignition Furnace (1000 BTU's)	20	20	20	20	20	20

Weights include slide-out (if applicable). Some options are not included in the weights displayed. See the list of features that are included in the calculation table.

Your Northwood Dealer



SPRING
2018

Updated Apr. 2017

