

# Arctic Fox Campers



*Introducing the New...*

*Silver Fox Edition*  
Aluminum SuperStructure 



*Inside the New*

# *Arctic Fox Campers*

*Silver Fox Edition*

**Deeper  
Slide,  
Full  
← 26" →  
Depth**

**Queen Size Bed**

**← Main Floor →  
Nearly One Foot  
Wider!**

*Our Largest Interior Ever!*



# More Interior Living Space



Large  
3-Way  
Double  
Door  
Refer

## Arctic Fox Campers Always Lead The Pack!

Built to withstand off-road use without leaving behind the comforts of home, the Arctic Fox Camper is the most innovative truck camper on the market today. For years, Northwood has been the industry leader with the truck camper slide-out concept and this year is no exception! With the launch of our Silver Fox aircraft style superstructure, our Transverse Floor, and our deepest slide out yet, we plan to continue leading the industry in innovative slide out camper engineering. Like all Arctic Fox Campers, these new Foxes are durable enough for extended cross-country and off-road travel. The availability of a Full-wall slide-out in all models is a trade mark of the Arctic Fox.

We build our slide outs right, using dual rack and pinion slides (while many competitors rely on a single slide mechanism.) Heavy duty rollers carry the slide-out allowing the room to move smoothly. Five separate seals insure against water intrusion. The slide room is completely insulated for your comfort in all weather conditions. You have your choice of four beautiful interior decor colors. Feature fabrics enhance the solid oak hardwoods and textured wall boards. We use only commercial grade vinyl floor covering and you also have the option of a removable carpet kit.



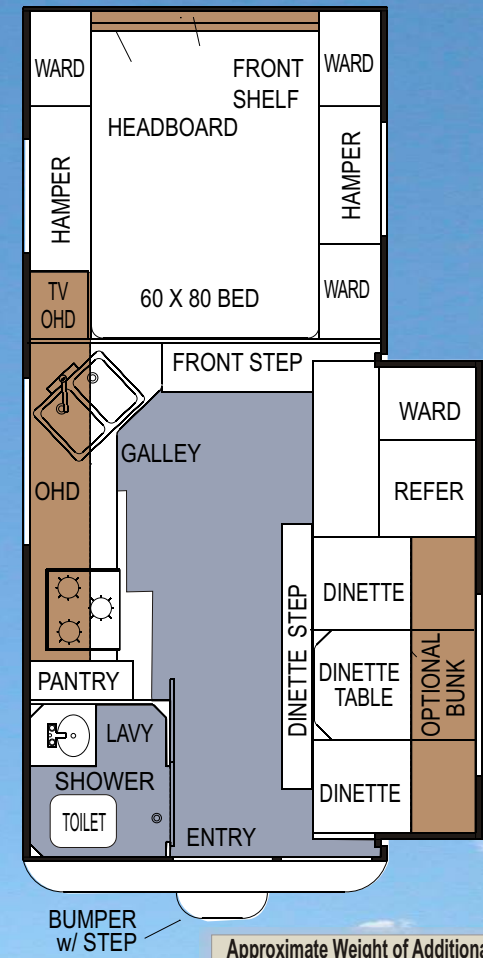
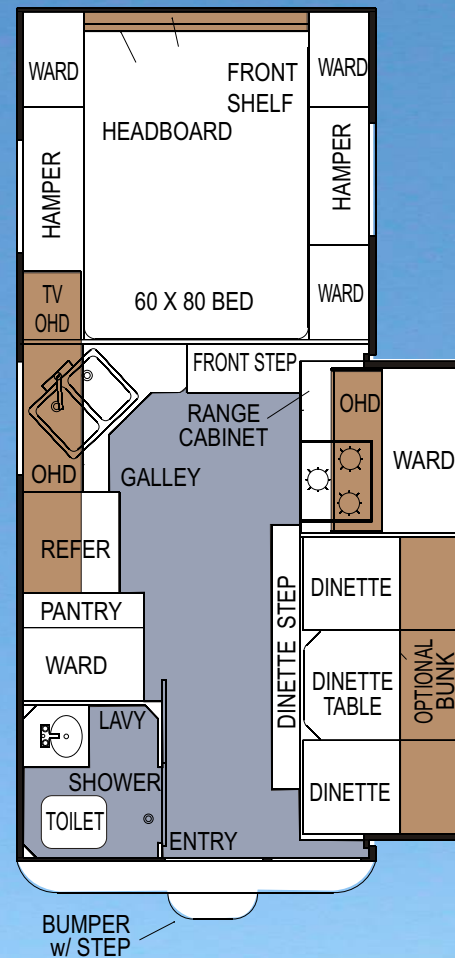
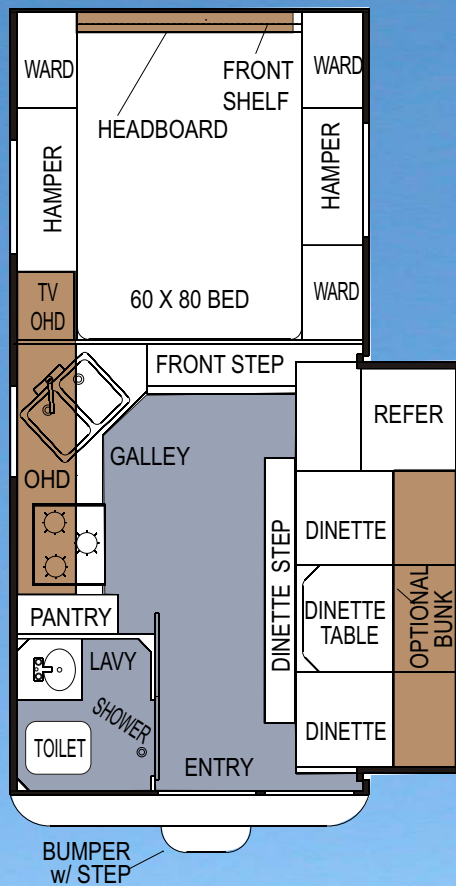
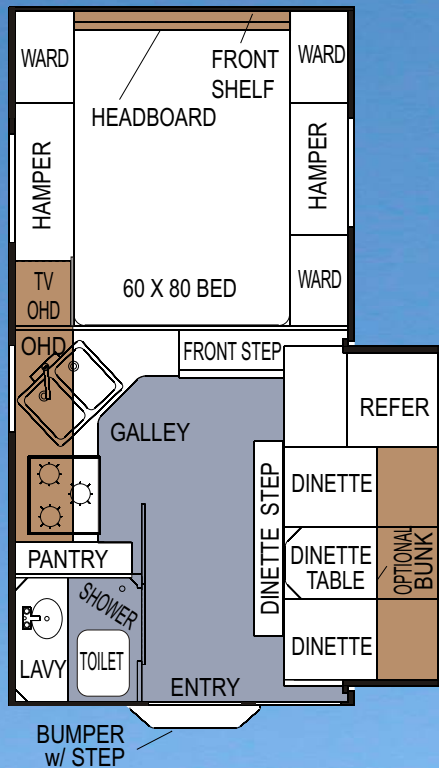
# Spacious Bedrooms!

## 860 WET BATH

## 990 WET BATH

## 1140 WET BATH

## 1150 WET BATH



### Approximate Overall Weight and Measure Specifications For Arctic Fox Campers:

Please note that weights are approximate for estimation purposes only. Specifications and weights subject to change without notice. 10/04

(Weights Include Full Wall Slide Option)

Description	Model 860	Model 990	Model 1140	Model 1150
Dry Weight Extended Cab	2985 lbs	3281 lbs	3701 lbs	3600 lbs
Dry Weight Extended Cab	1354 kgs	1488 kgs	1678 kgs	1633 kgs
Width	96 1/2"	96 1/2"	96 1/2"	96 1/2"
Exterior Height	101"-111"w/air	101"-111"w/air	101"-111"w/air	101"-111"w/air
Interior Height	80"	80"	80"	80"
Floor Length	8' 6"	9' 10"	11' 5"	11' 5"
Overall Length	16' 1"	17' 6"	19'	19'
Fresh Water w/ Water Heater	46 gal	46 gal	46 gal	46 gal
Grey Water	25 gal	35 gal	35 gal	35 gal
Black Water	25 gal- 22gal gen ready	40 gal	40 gal	40 gal
LPG Capacity	14 gal	14 gal	14 gal	14 gal

### All Unit Weights Include The Following Features:

Semi-Automatic Winterization System, Smoke, LPG Leak and CO Detectors, 60x80 Upgrade Inner Spring Mattress, Range Hood w/ Light and Exhaust Fan, Phone Jack - Ready for Solar and Satellite, Decor Coordinated Headboard and Bedspread, Large 3-burner Range W/ 22" Oven (16" on 1140), DSI Gas Water Heater with Insulated Porcelain Tank, 20 M BTU Auto Ignition Furnace with Thermostat Control, Kenwood A/M F/M Stereo CD Player and 25 Watt Speakers, Heavy-duty Camper Tie Down, Water Heater By-pass Valve, 3-Way 6 Cubic Foot Refer, Roof Rack and Ladder, Fiberglass Exterior, Microwave Oven, Fire Extinguisher,, Exterior Shower, Sliding Pantry, Range Cover.

### Approximate Weight of Additional Features:

Option	Estimated Weight	
	Lbs.	Kilos
Weight of Model		
3 Night Shades Cabover (2lb)	6	3
Galley Skylight w/ Shade	2	1
Electric Jacks	51	23
TV Antenna	11	5
Fan Vent	8	4
Rear Awning	40	18
OHD Bunk	40	18
Swing out Brackets	21	10
11M BTU Air Cond.	90	41
Solar Panel 50-W	22	10
Solar Panel 100-W	32	15
Removable Carpet	10	5
Side Box Awning	63	29
Slide-out Awning	32	15
Bumper 860 only	35	16
89" Rear Awning	31	14
Add-a-Room	35	16
Generator Ready	25	11
2.5 Generator	78	35
Bar-b-que	22	10
One Battery	30	14
Water Full	383	174
Propane Full	60	27

Weights include Slide-out, when applicable, some options may not be included in weight. See the list of features that are included in the weight calculation in the text block above. Northwood Manufacturing, 59948 Downs Rd., PO Box 3359, La Grande, OR 97850 (541) 962-6274. Northwood, 380 Battaile Dr., PO Box 2630, Winchester VA 22604 (540) 542-6140 - [www.northwoodmfg.com](http://www.northwoodmfg.com) - 2005 Northwood

Photos and drawings are representative of Arctic Fox Travel Trailers and 5th Wheels and may differ slightly from actual production models. We continually upgrade & improve our Fox products and reserve the right to change specifications without notice. Check with your authorized dealer for updated information.

FALL 2004

Printed 11-04

Use these figures to estimate the total weight of the coach with added options: camper weight + addl. options.

*Floor Plans*

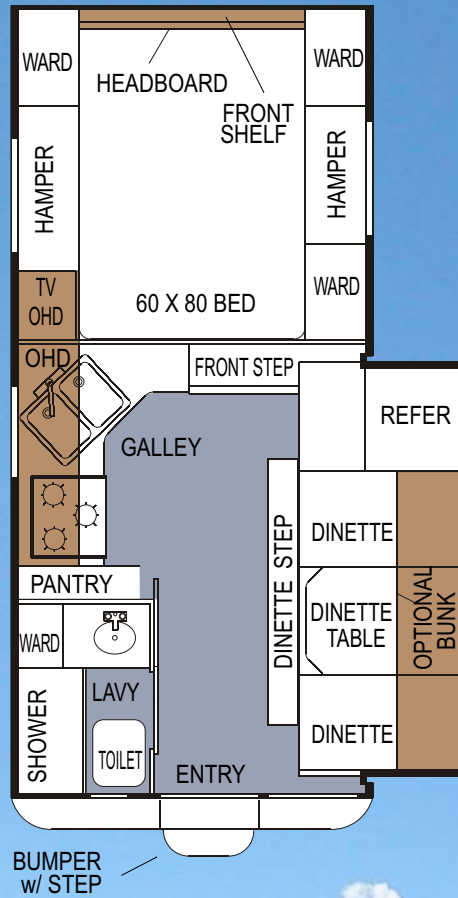


Typical Wet Bath

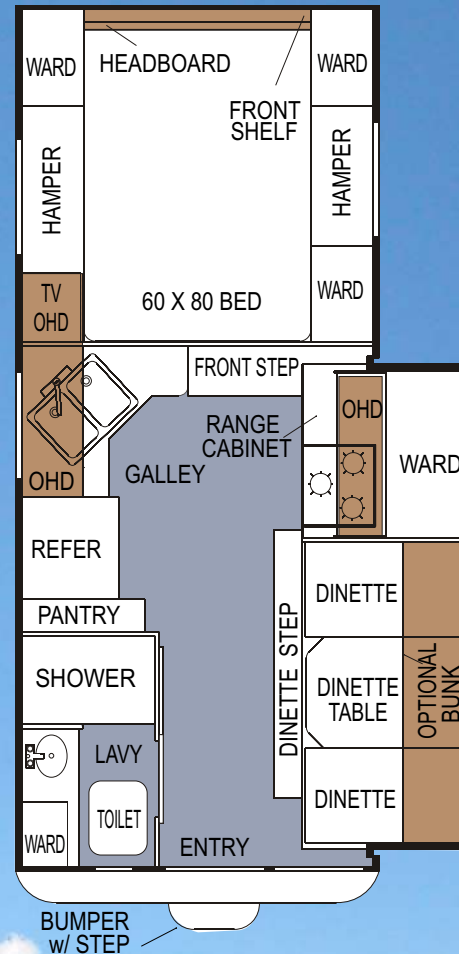
◀ **Wet Bath Floor Plans**

**Dry Bath Floor Plans** ▶

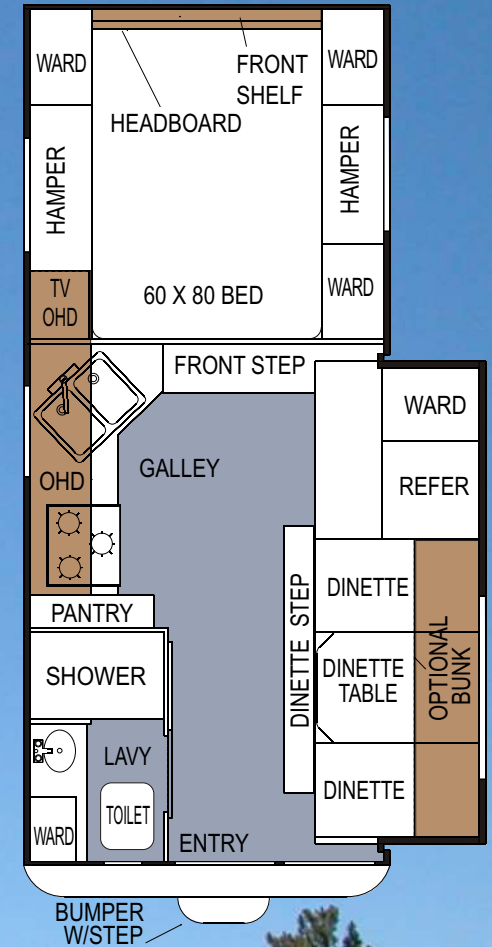
**990 DRY BATH**



**1140 DRY BATH**



**1150 DRY BATH**



**Bigger is Better! - Bigger SlideOuts & Bigger Floors!**

Arctic Fox is the leader in full wall slide out truck camper design. This year we are proud to bring you our biggest slide out yet! We've added nearly 25% more depth to our already extra large, full wall slide.

The new Aluminum superstructure slide measures over two feet in depth! When you compare the dimensions of our slide out with the competition, you will see why Arctic Fox continues to be...

**MORE BIG NEWS!** -We've increased the width of the main floor by nearly a foot! In addition, our new aluminum superstructure allowed us to increase the depth of our slide-out by nearly 25%! The result is over 40 cubic feet of additional interior living space, without increasing the overall outside dimension of the camper shell (when the slide is retracted)!

*...The #1 Selling Slide-out Camper!*



Typical Dry Bath



Curtain folding wall is standard with all Arctic Fox Campers.



Dual Ram Gear Driven Slide Assembly in All Slide Outs



Optional Front Window in Bedroom Suite and Diamond Plate on the Cab Over



Diamond Plate Kick Panels. Storage in Bumper w/ Locking Doors at Both Ends.



Extra Large 7' x 8' Rear Awning Standard on All Models



Hide-Away Shower Screen completely stows away

Extra Large Holding Tanks with up to:  
46 Gal Fresh Capacity  
35 Gal Grey  
40 Gal Black  
(in 990, 1140, 1150)

- \* Monitor Panel (Holding Tanks & Batteries)
- \* Generator Panel (optional)
- \* Kenwood Stereo (optional CD)
- \* Solar Panel Monitor (not pictured)



Marine Style Full Pressure Hot / Cold Exterior Shower

Auto Scanning Satellite Dish (Option Available)



50 or 100 Watt Solar Panels (Option Available)



Quick Connect LPG Hook-up for Barbeque and other Exterior Appliances

Cable, Phone & Satellite Ready (All Models)



Flat Screen TV (Option Available)



12 Volt Exterior Lighting at Patio w/ Interior Switch



Dual 7gal LPG Tanks w/ Auto Switch-Over Regulator



Sliding Pull out Pantry Cabinet



Skylight w/ Shade Available



(Underside View)



Sliding Dual Battery Tray Holds Two Group 29 Batteries 420 Amp Total Capacity

## Options and Features:

*Our Arctic Fox Campers are loaded with all the features you're looking for in a truck camper. The following charts outline the features and options we currently offer in the 2005 Arctic Fox Camper.*

	860	990	1140	1150	Construction
<b>S</b>	<b>S</b>	<b>S</b>	<b>S</b>	<b>S</b>	All Aluminum Superstructure (Silver Fox Edition)
<b>S</b>	<b>S</b>	<b>S</b>	<b>S</b>	<b>S</b>	Fully Welded Frame Assembly
<b>S</b>	<b>S</b>	<b>S</b>	<b>S</b>	<b>S</b>	Hot Urethane Bonded Lamination Process
<b>S</b>	<b>S</b>	<b>S</b>	<b>S</b>	<b>S</b>	Hardwall With Exterior Graphics
<b>S</b>	<b>S</b>	<b>S</b>	<b>S</b>	<b>S</b>	Rigid Block Foam Insulation Throughout
<b>S</b>	<b>S</b>	<b>S</b>	<b>S</b>	<b>S</b>	Laminated Walls, Front, Rear, Bulkhead & Floor
<b>S</b>	<b>S</b>	<b>S</b>	<b>S</b>	<b>S</b>	Tapered Rigid Block Foam Laminated Roof
<b>S</b>	<b>S</b>	<b>S</b>	<b>S</b>	<b>S</b>	Thick One-Piece Rubber Roof
<b>S</b>	<b>S</b>	<b>S</b>	<b>S</b>	<b>S</b>	100% Walk On Roof Structure (end to end)
<b>S</b>	<b>S</b>	<b>S</b>	<b>S</b>	<b>S</b>	Radius Corner Windows w/ Interior Clamp Ring System
<b>S</b>	<b>S</b>	<b>S</b>	<b>S</b>	<b>S</b>	Tinted Safety Glass Windows w/ Torque & Sliders
<b>S</b>	<b>S</b>	<b>S</b>	<b>S</b>	<b>S</b>	Recessed Automotive Tail Lights w/ Backup Lights
<b>S</b>	<b>S</b>	<b>S</b>	<b>S</b>	<b>S</b>	Face Frame Construction-All Cabinets
<b>O</b>	<b>O</b>	<b>O</b>	<b>O</b>	<b>O</b>	Thermal Pane Windows
<b>O</b>	<b>O</b>	<b>O</b>	<b>O</b>	<b>O</b>	Storm Windows
<b>S</b>	<b>S</b>	<b>S</b>	<b>S</b>	<b>S</b>	Extended Cab
<b>S</b>	<b>S</b>	<b>S</b>	<b>S</b>	<b>S</b>	CSA (Certified In Canada)
<b>O</b>	<b>O</b>	<b>O</b>	<b>O</b>	<b>O</b>	Front Cab-Over Window

	860	990	1140	1150	LP Gas
<b>S</b>	<b>S</b>	<b>S</b>	<b>S</b>	<b>S</b>	Dual 30lb LPG Bottles
<b>S</b>	<b>S</b>	<b>S</b>	<b>S</b>	<b>S</b>	Auto Change-Over Regulator
<b>I</b>	<b>I</b>	<b>I</b>	<b>I</b>	<b>I</b>	LPG Quick Connect
<b>O</b>	<b>O</b>	<b>O</b>	<b>O</b>	<b>O</b>	LPG Barbeque

### Heating and Air Conditioning

<b>S</b>	<b>S</b>	<b>S</b>	<b>S</b>	<b>S</b>	20M BTU Auto Ignition Furnace
<b>S</b>	<b>S</b>	<b>S</b>	<b>S</b>	<b>S</b>	Residential Style Climate Control Thermostat
<b>O</b>	<b>O</b>	<b>O</b>	<b>O</b>	<b>O</b>	11K BTU Air Conditioner

### Bathroom / Lavy

<b>S</b>	<b>S</b>	<b>S</b>	<b>S</b>	<b>S</b>	One-piece Fiberglass Shower Enclosure (Wet Bath)
<b>S</b>	<b>S</b>	<b>S</b>	<b>S</b>	<b>S</b>	Bath Skylight, Bath Power Vent
<b>S</b>	<b>S</b>	<b>S</b>	<b>S</b>	<b>S</b>	Marine Toilet
<b>N</b>	<b>S</b>	<b>S</b>	<b>S</b>	<b>S</b>	Dry Bath (n/a In 860)

	860	990	1140	1150	Interior
<b>S</b>	<b>S</b>	<b>S</b>	<b>S</b>	<b>S</b>	Privacy Curtain Room Divider
<b>S</b>	<b>S</b>	<b>S</b>	<b>S</b>	<b>S</b>	Ozite Ceiling Carpet Throughout
<b>S</b>	<b>S</b>	<b>S</b>	<b>S</b>	<b>S</b>	Commercial Grade Linoleum Flooring
<b>S</b>	<b>S</b>	<b>S</b>	<b>S</b>	<b>S</b>	Raised Oak Panel Deluxe Doors Throughout
<b>S</b>	<b>S</b>	<b>S</b>	<b>S</b>	<b>S</b>	Solid Wood Drawers w/Roller Guides
<b>S</b>	<b>S</b>	<b>S</b>	<b>S</b>	<b>S</b>	Radius Finished Edges On Overhead Cabinets
<b>S</b>	<b>S</b>	<b>S</b>	<b>S</b>	<b>S</b>	Adjustable Reading Lights In Bedroom
<b>I</b>	<b>I</b>	<b>I</b>	<b>I</b>	<b>I</b>	Kenwood AM/FM Stereo w/Tape Deck & Speakers
<b>O</b>	<b>O</b>	<b>O</b>	<b>O</b>	<b>O</b>	Flat Screen TV
<b>S</b>	<b>S</b>	<b>S</b>	<b>S</b>	<b>S</b>	Deluxe Queen Mattress & Bedspread
<b>O</b>	<b>O</b>	<b>O</b>	<b>O</b>	<b>O</b>	Overhead Bunk In Slide Out
<b>O</b>	<b>O</b>	<b>O</b>	<b>O</b>	<b>O</b>	Full Wall Wardrobe
<b>I</b>	<b>I</b>	<b>I</b>	<b>I</b>	<b>I</b>	Fan Vent in Bedroom
<b>O</b>	<b>O</b>	<b>O</b>	<b>O</b>	<b>O</b>	Removable Living Room Carpet
<b>I</b>	<b>I</b>	<b>I</b>	<b>I</b>	<b>I</b>	Night Shades All Windows

Some features are not available on certain models, see your authorized dealer for more information.

Northwood Manufacturing reserves the right to modify options, change feature availabilities and plan configurations at any time.

Northwood manufactures it's coaches with many of the popular options that our customers normally request. The vast majority of our customers request these options so unless otherwise specified, our regular manufacturing runs will include all of these 'most popular' features. You will find these items designated with an "I" in the options chart above.

# Plenty of Sleeping Accomodations

Warm, Spacious, Quiet & Comfortable all of these words describe the bedroom suite in The Arctic Fox Camper. The suite features a deluxe queen-size mattress with coordinated bedspread and window valance accents. The sleeping area is equipped with an expanding curtain wall between the main cabin and sleeping area providing privacy to both sections. The bedroom also has plenty of headroom for entering and exiting the main cabin. The dinette in all Arctic Fox Campers also converts to a comfortable additional sleeping area for kids or guests.



The sleeping area is equipped with an expanding curtain wall between the main cabin and sleeping area providing privacy to both sections. The bedroom also has plenty of headroom for entering and exiting the main cabin. The dinette in all Arctic Fox Campers also converts to a comfortable additional sleeping area for kids or guests.



Roll-Over Dinette/Lounge

## Roll-Over Dinette / Lounge

In this option, our removable table in the slide out allows the lounge to roll-over and convert to an extra sleeping area.



Slideout Overhead Bunk

## Slide-Out Overhead Bunk

With this configuration, hinged interior panels fold down from the upper wall and ceiling to convert into an additional bunk bed over the dinette creating a perfect great extra bed for children or smaller adults. (#150 weight limit on the upper bunk.)

860	990	1140	1150	<b>Safety Features</b>				
S	S	S	S	S	S	S	S	Smoke Detector
S	S	S	S	S	S	S	S	LPG Leak Detector
S	S	S	S	S	S	S	S	CO Detector
S	S	S	S	S	S	S	S	Fire Extinguisher
S	S	S	S	S	S	S	S	Exterior Entry Assist Handle
				<b>Electrical</b>				
S	S	S	S	S	S	S	S	12-Volt Patio Lights w/Interior Switch
S	S	S	S	S	S	S	S	AC/DC Converter-Charge Wizard Battery Mgmt. System
S	S	S	S	S	S	S	S	12-Volt Interior Lighting System
S	S	S	S	S	S	S	S	GFI Circuit Protection - GFI Patio Receptacle
S	S	S	S	S	S	S	S	Pre-wired (A/C, TV Antenna & Fan Vent)
S	S	S	S	S	S	S	S	Manual Camper Jacks - Pre-wired For Electric
I	I	I	I	I	I	I	I	4-Way Remote Electric Camper Jacks
O	O	I	I	I	I	I	I	Swing-Out Jack Brackets
S	S	S	S	S	S	S	S	Fluorescent Lighting
S	S	S	S	S	S	S	S	Wired For Cable TV
S	S	S	S	S	S	S	S	Phone Jack / Data Port
S	S	S	S	S	S	S	S	Solar Panel Ready
O	O	O	O	O	O	O	O	50 Watt Solar Panel w/ Controller
O	O	O	O	O	O	O	O	100 Watt Solar Panel w/ Controller
S	S	S	S	S	S	S	S	Satellite Ready
O	O	O	O	O	O	O	O	Satellite Dish
O	O	O	O	O	O	O	O	Auto Scan Satellite Dish
S	S	S	S	S	S	S	S	12 Volt Kill Switch
I	I	I	I	I	I	I	I	Sliding Battery Rack
I	I	I	I	I	I	I	I	Generator Ready All Models (except 860 Long Box)
O	O	I	I	I	I	I	I	2.5 Onan Generator

860	990	1140	1150	<b>Kitchen / Galley</b>				
S	S	S	S	S	S	S	S	RV Systems Monitor Panel (Tanks & Batteries)
S	S	S	S	S	S	S	S	High Rise Galley Faucet
S	S	S	S	S	S	S	S	Range Hood w/Light & Exhaust Fan
S	S	S	S	S	S	S	S	Large Galley Sink - Cutting Board/ Sink Cover
S	S	S	S	S	S	S	S	Residential Style Self-edged Counter Tops
S	S	O	S	S	S	S	S	3-way 6 Cubic Foot Double Door Refer
N	N	S	N	S	S	S	S	3-way 8 Cubic Foot Double Door Refer
S	S	S	S	S	S	S	S	3-Burner Range w/22" Oven
N	N	I	N	S	S	S	S	3-Burner Range w/16" Oven (1140)
S	S	S	S	S	S	S	S	Microwave Oven w/Carousel
I	I	I	I	S	S	S	S	Galley Skylight w/Shade
S	S	S	S	S	S	S	S	12" Lexan Range Back Splash
				<b>Plumbing</b>				
S	S	S	S	S	S	S	S	Semi-automatic Winterization System
S	S	S	S	S	S	S	S	Water Heater Bypass Valve
S	S	S	S	S	S	S	S	Freeze Resistant 1/2" Water Lines
O	O	O	O	O	O	O	O	DSI Gas/Electric Water Heater
S	S	S	S	S	S	S	S	DSI Gas Water Heater
								...w/Insulated Porcelain Lined Tank
				<b>KEY</b>				
				S				Standard (no charge)
				I				Included - Model is Normally Built w/ this Option
				O				Option Available on Request
				N				Not Available in this Model

860	990	1140	1150	<b>Exterior</b>				
N	S	S	S	S	S	S	S	Diamond Plate Kick Panel (n/a on 860)
S	S	S	S	S	S	S	S	Rear Back-up Window
S	S	S	S	S	S	S	S	Heavy-duty Camper Tie Downs
S	S	S	S	S	S	S	S	Extra Wide Radius Rear Entry Door
								...w/ Extra Lg Windows (Opaque Upper & Clear Lower Back-Up)
								...w/ Flush Mount Lock w/Dead Bolt
								...and Screen Door w/ Kick Panel
S	S	S	S	S	S	S	S	Large J-Rail Rain Gutters
S	S	S	S	S	S	S	S	Clearance Lights
I	I	I	I	I	I	I	I	Deluxe Bumper
I	I	I	I	I	I	I	I	Rear Awning
O	O	O	O	O	O	O	O	Side Box Awning
O	O	O	O	O	O	O	O	Full Wall Slide-out Awning
O	O	I	I	I	I	I	I	Swing Out Brackets For Dually
I	I	I	I	I	I	I	I	TV Antenna
O	O	O	O	O	O	O	O	Add-a-Step
O	O	O	O	O	O	O	O	Add-a-Room
S	S	S	S	S	S	S	S	Marine Style Exterior Shower
S	S	S	S	S	S	S	S	Roof Rack & Ladder
S	S	S	S	S	S	S	S	Heated Holding Tanks
S	S	S	S	S	S	S	S	1" Radius Corner, Insulated Luggage Doors,
								...w/ Rubber Seals, Metal Locks,
								... and Thumb Latches & Pulls



# NEW! *Silver Fox Edition* ALUMINUM SUPERSTRUCTURE

#1 Selling  
Slide-Out  
Camper!

*Arctic Fox*  
Campers



Huge Full Wall Slide with 43"x 78" Dinette  
(Available in Most Models)

Main Floor Nearly One Foot Wider  
Than Other Campers!

Aircraft Construction Strong & Light!

Rigid Foam Insulation Mounted in a  
Fully Welded Super Structure with 100%  
Bonded Lamination in All Walls, Floor, Roof.

'XL' Aluminum Floor Truss/Tank Support Design

\* Larger Tank Capacity - All Tanks are Enclosed,  
Insulated, & Heated (A True 4 Season Coach).  
(46gal. Fresh, 35gal. Gray, 40gal. Black- Most Models)

\* Sliding Battery Tray Holds Two Group  
29 Batteries-420 Amp Capacity

\* Wet or Dry Bath Avail. (Most Models)

\* Large Double Door Refrigerator

\* Sliding Storage Pantry Rack

\* Solar and Satellite Ready

\* 60"x80" Queen Size Bed

\* 2 - 7 gal LPG Tanks

\* Wider Entry Door

\* Kitchen Skylight

\* Phone Jacks

\* ...Much More!

## Fox Camper Safety Tips

Truck manufacturers state that you should not exceed the GVRW for the vehicle that carries your camper. The configuration of your truck will determine what size camper your vehicle can carry. A dual rear wheel truck is advisable for Arctic Fox Campers over 10 feet.

Some states allow passengers to ride in the camper, but it is not recommended as there are no seat belts available.

Use **TORKLIFT** frame mounted camper tie downs for greatest safety.



Adjustable air bags will help to level your vehicle, transfer rear axle weight forward for comfort and safety and are recommended for all Arctic Fox applications.

For your safety while driving, use mirrors that allow you to view past the camper to the rear on both sides. Trucks can be purchased with extended mirror options, or you may purchase mirror extensions.

Use camper guides to help you easily load to the center of your truck for balance and safety.

When driving in any adverse weather condition, it is always best to reduce your speed.

*'Silver Fox Edition' Models are Aluminum Framed*

[www.northwoodmfg.com](http://www.northwoodmfg.com)



Your Arctic Fox Camper Dealer is:

Blank space for dealer information.