

By **NORTHWOOD**

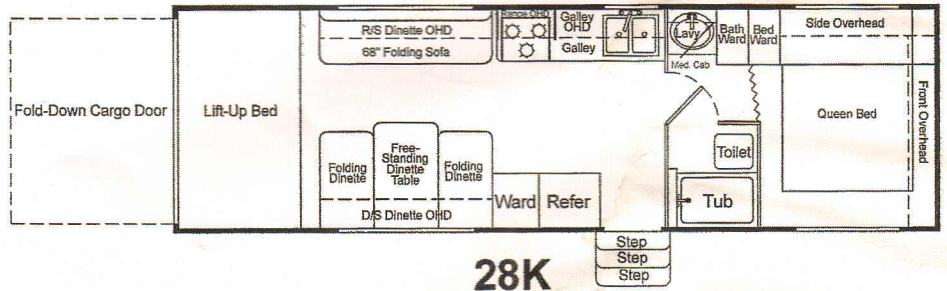
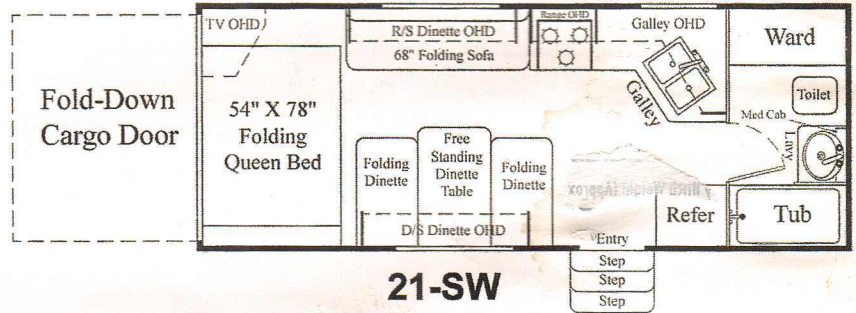
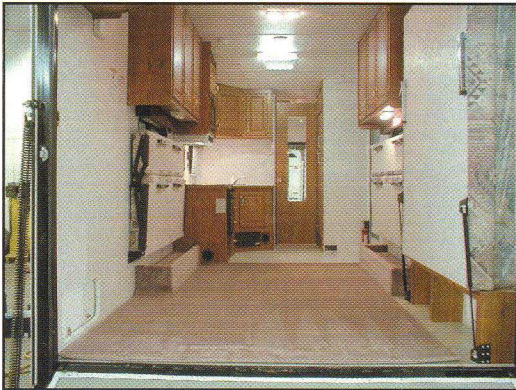
BRINGING YOU...

**The 21-SW
& 28-KS**

**A Sport Utility RV from
the makers of**

NASH

and ARCTIC FOX



Construction & Exterior Features

- * Deluxe Mesa Aluminum Sidewalls (Optional Hardwall)
- * Structural Steel Chassis
- * Double Primed Welds to Reduce Rusting
- * Epistoleum Coated Chassis
- * Rubber Roof
- * Walls and Floors
- * R-18 Insulation in Ceiling
- * 2" X 3" Floor
- * Northwood Roof Truss System
- * Radius Cornered Windows w/Interior Fasteners
- * R/S D/S High Intensity Exterior Work Lights
- * Outside Speakers

High Payload Axles, Tires & Wheels

- * Double Steps (Optional Triple Steps)
- * Tandem Axles
- * Electric Brakes on All Four Wheels
- * Radial Tires & Chrome Beauty Rings
- * Chrome Lug Nuts & Hub Covers
- * Shock Absorbers All 4 Wheels

Additional Exterior Benefits

- * Awning
- * Roof Rack & Ladder Ready
- * Large Capacity Water & Holding Tanks
- * Dual 30# LPG Bottles
- * LPG Auto Change Over and Bottle Cover
- * Dual Battery Rack
- * Freeze Resistant Water Lines
- * Skylight Roof Vents and Power Bath Vent
- * Radius Exterior Storage Compartments- Automotive Seals-1" Insulated-Locking
- * Retractable Entry Steps
- * 30" X 72" Radius Entry Door w/Window
- * Flush Mount Entry Door Lock w/Dead Bolt
- * Screen Door w/Kick Panel
- * Mud Flaps
- * Ventilating Emergency Exit Windows
- * Exterior Shower
- * Semi-Automatic Winterization System

Convenience Features

- * Prewired for Stereo w/Quality Speakers
- * Prewired for Cable TV w/Park Receptacle
- * Prewired for Roof Air Conditioner
- * Quick-Recovery Gas Water Heater w/Insulated Porcelain Tank
- * 12-Volt Patio, Hitch & Waste Dump Lights
- * RV Systems Monitor Panel

Essential Safety Features

- * Smoke Detector
- * LPG Leak Detector
- * Fire Extinguisher
- * GFI Circuit Protection
- * Doorside GFI Patio Receptacle
- * Entry Assist Handle
- * Flush Floor Tie Downs

Spacious Work Surface in Galley

- * Double Door Climate Control Refer w/Raised Panel Inserts
- * Extra Large 22" Range w/Broiler Oven
- * Prewired for Microwave Oven
- * Range Hood w/Light & Exhaust Fan
- * Double Porcelain Galley Sink
- * Sink Cover
- * Residential Style Self-Edged Counter Tops
- * OHD Cabinets Complete w/Divider Shelves to Maximize the Abundant Storage Areas
- * Drawers Slide on Roller Guides
- * Black Appliances
- * 12" Acrylic Back Splash Surrounds Range

Practical Bathroom Design

- * Marine Toilet with Foot Pedal
- * Large Lavy Bowl
- * Hand Crafted Medicine Cabinet w/Leaded-Style Mirror

Additional Interior Benefits

- * 25M BTU Auto Ignition Furnace
- * Large AC/DC Power Converter w/Battery Charger
- * 12-Volt Interior Lighting System
- * TV Antenna
- * Fluorescent Lighting
- * Mini Blinds and Coordinated Valance Treatment on All Windows
- * Custom R/S D/S Dual Roll Over Sofas (Opt R/S Roll Over Sofa D/S Flip Dinette)
- * 20 Mil Designer Vinyl Flooring
- * Upgrade 7" Inner Spring Mattress
- * Raised Panel Doors Throughout
- * Radius Finished Edges on OHD Cabinets
- * Choice of Interior Decor Colors

Popular Options

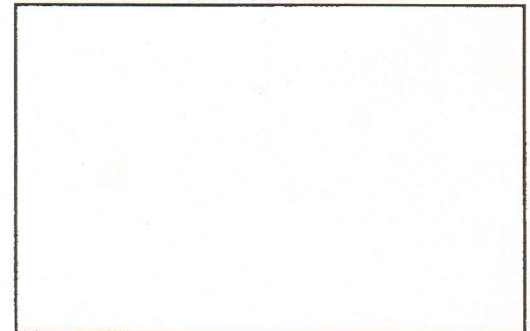
- * 13.5 BTU Air Conditioner w/Ducting
- * 8 cu ft Double Door Refer
- * Microwave Oven
- * Range Cover
- * Rear Screen Wall
- * Rear Awning
- * Rear Patio Room
- * Hardwall
- * Stereo Cassette or CD Player
- * Phone Jack
- * Solar Ready - 50 or 100 Watt Solar Panels
- * Satellite Ready
- * Stabilizer Jacks
- * DSI Gas or Gas/Electric Water Heater
- * Heated Enclosed 100 gal Fresh Water
- * Heated Holding Tanks
- * Chassis Mount Spare Tire
- * Storm Windows
- * Roll Up Carpet Kit
- * Generator Ready-Generator-CO2 Detector
- * 12-Volt Power Jacks
- * Fantastic Power Vent
- * Diamond Plate Front Rockguard
- * Skylight Dome with Shade
- * Roof Rack & Ladder
- * CSA Certified

FULL 2 YEAR WARRANTY

2002 Specifications

Description	21-SW	21-SW Hardwall	28-KS	28-KS Hardwall
Dry Axle Weight (Approx lbs)	4653	5195	5985	6250
Dry Hitch Weight (Approx lbs)	740	820	1100	1165
"	5007	4385	3915	3585
Gross Dry Weight-lbs (w/o options)	5393	6015	7085	7415
Gross Vehicle Weight Rating (GVWR)	10400	10400	11000	11000
Exterior Length (Approx w/hitch)	25'	25'	32'	32'
Exterior Height (Approx w/o AC)	11'4"	11'4"	11'7"	11'7"
Exterior Width (Approx w/o Awning)	8'	8'	8'4"	8'4"
Tire Size	ST225-75SR15	ST225-75SR15	ST225-75SR15	ST225-75SR15
Load Range	D	D	D	D
Fresh water capacity (Approx gallons)	112	112	112	112
Gray Water Tank (Approx gallons)	45	45	47	47
Black Water Tank (Approx gallons)	37	37	50	50
LPG Capacity (Approx gallons)	14	14	14	14

YOUR DESERT FOX DEALER IS



Photos and drawings are representative of the DESERT FOX sport utility trailer and may differ slightly from actual production models. We at Northwood continually upgrade and improve our DESERT FOX products and reserve the right to change specifications without notice. Check with your authorized dealer for updated information.

Northwood Manufacturing
 59948 Downs Road
 P.O. Box 3359
 La Grande, OR 97850
 Phone: 541-962-6274

Att. Ron
 541
 722
 1460